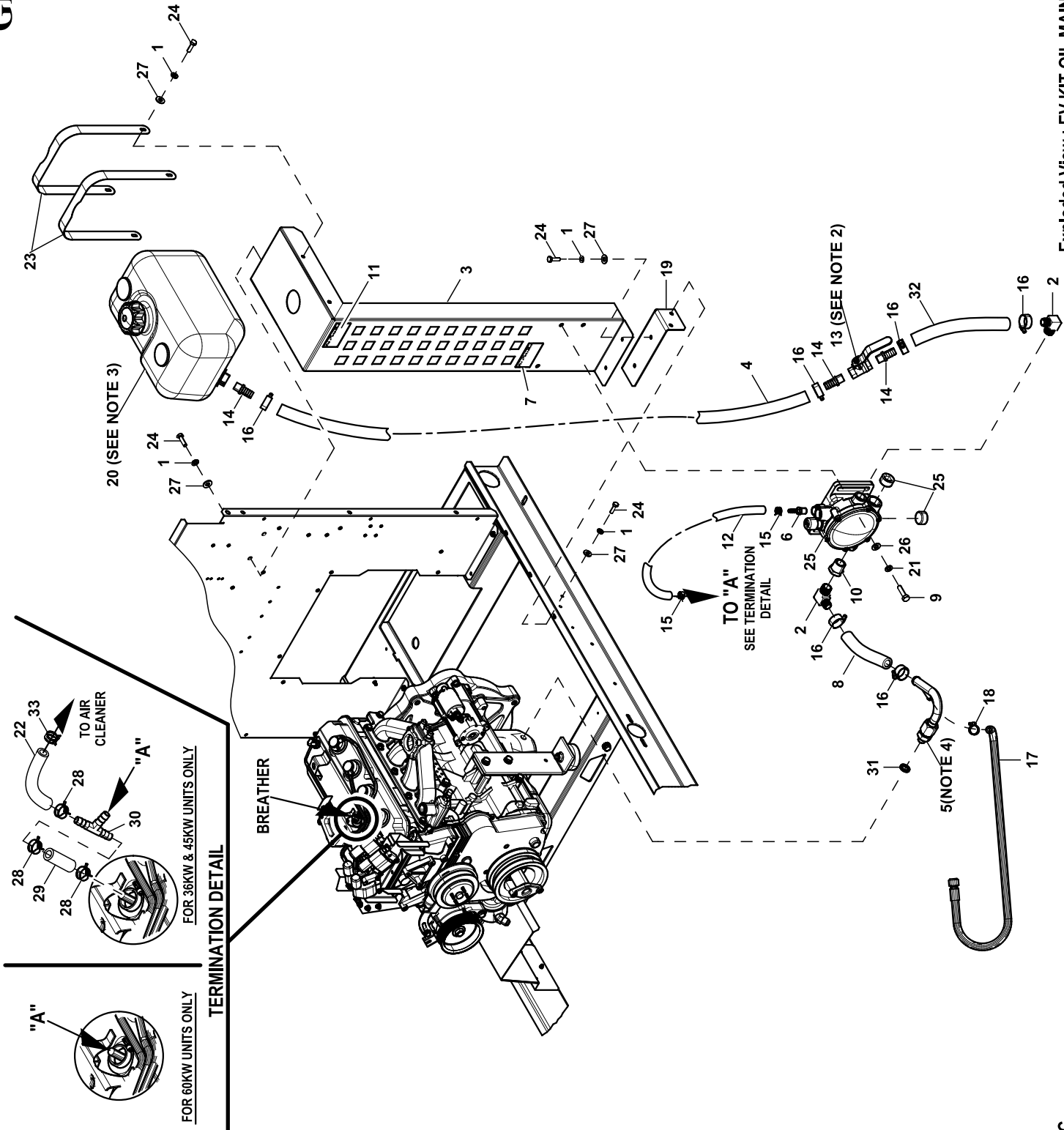


# GROUP H



**EXPLODED VIEW: EV KIT OIL MAINTAINER RG 2.4L G2**

**DRAWING #:0K9129A**

**GROUP H**

ITEM	PART#	QTY.	DESCRIPTION
1	022097	10	WASHER LOCK M6-1/4
2	056460	2	BARBED EL 90 1/2 NPT X 5/8
(1)3	0L02740ST0R	1	BRKT, OIL TANK/REG
4	065386	1	HOSE COOL 5/8 ID 100R6 (11 1/2" LG)
(4)5	0L1315	1	TUBE OIL FITTING ASSEMBLY
6	0H7484	1	BARBED STR 1/2NPT X 5/16
7	0L0171	1	DECAL NOTICE TEST BUTTON
8	065386	1	HOSE COOL 5/8 ID 100R6 (8 3/4" LG)
9	049814	3	SCREW HHC M10-1.5 X 25 C8.8
10	0G0542	1	BSHG RDCR HEX 3/4 TO 1/2
11	0L0338	1	DECAL NOTICE CLEAN OIL
12	052221	1	HOSE 5/16 ID TYP1 SNGL HTR (36" LG)
(2)13	0G5212B	1	VALVE 3/8"
14	044117	3	BARBED STR 3/8NPT X 5/8
15	048031N	2	CLAMP HOSE BAND .53
16	057823	6	CLAMP HOSE #10 .56-1.06
17	069860E	1	HOSE OIL DRAIN ASSY 28"
18	0C7649	1	CLAMP HOSE .38-.87
(1)19	0K91240ST0R	1	BRKT, SUPPORT OIL TANK
20	0K1512	1	TANK, 2.5GAL OIL
21	046526	3	WASHER LOCK M10
22	052221	1(REF)	HOSE 5/16 ID TYP1 SNGL HTR (10" LG)
(1)23	0K16250ST0R	2	STRAP, 2.5GAL TANK
24	042568	10	SCREW HHC M6-1.0 X 20 C8.8
25	0L0161	1	OIL LEVEL REGULATOR
26	022131	3	WASHER FLAT 3/8-M10 ZINC
27	022473	10	WASHER FLAT 1/4-M6 ZINC
28	048031N	3(REF)	CLAMP HOSE BAND .53
29	052221	1(REF)	HOSE 5/16 ID TYP1 SNGL HTR (1 3/16" LG)
30	0C9079A	1(REF)	BARBED TEE 5/16" BRASS
31	0L5638	1	SEAL RING M14
32	065386	1	HOSE COOL 5/8 ID 100R6 (14" LG)
33	048031J	1(REF)	CLAMP HOSE BAND .63

NOTES (UNLESS OTHERWISE SPECIFIED):

(1) SHEET METAL PARTS LISTED IN THE BOM TABLE ARE REPRESENTING GENERIC PARTS (NO COLOR)

- MANUFACTURING: FOR CORRECT MATERIAL AND COLOR REFER TO XA BOM.
- CUSTOMER: WHEN ORDERING REPLACEMENT PARTS ENTER BASE NUMBER (FIRST 6 DIGITS ONLY) IN THE SYSTEM FOR CORRECT MATERIAL AND COLOR (FOR REFERENCE SEE GUIDELINE 0H7169).

(2) GENERATOR IS TO BE SHIPPED WITH BALL VALVE IN THE OPEN POSITION AS SHOWN.

(3) GENERATOR IS TO BE SHIPPED WITH OIL TANK EMPTY.

(4) TORQUE VALUES: (FOR REFERENCE ONLY)

ITEM #5 – 7ft-lbs. (M14 FITTING ONLY)