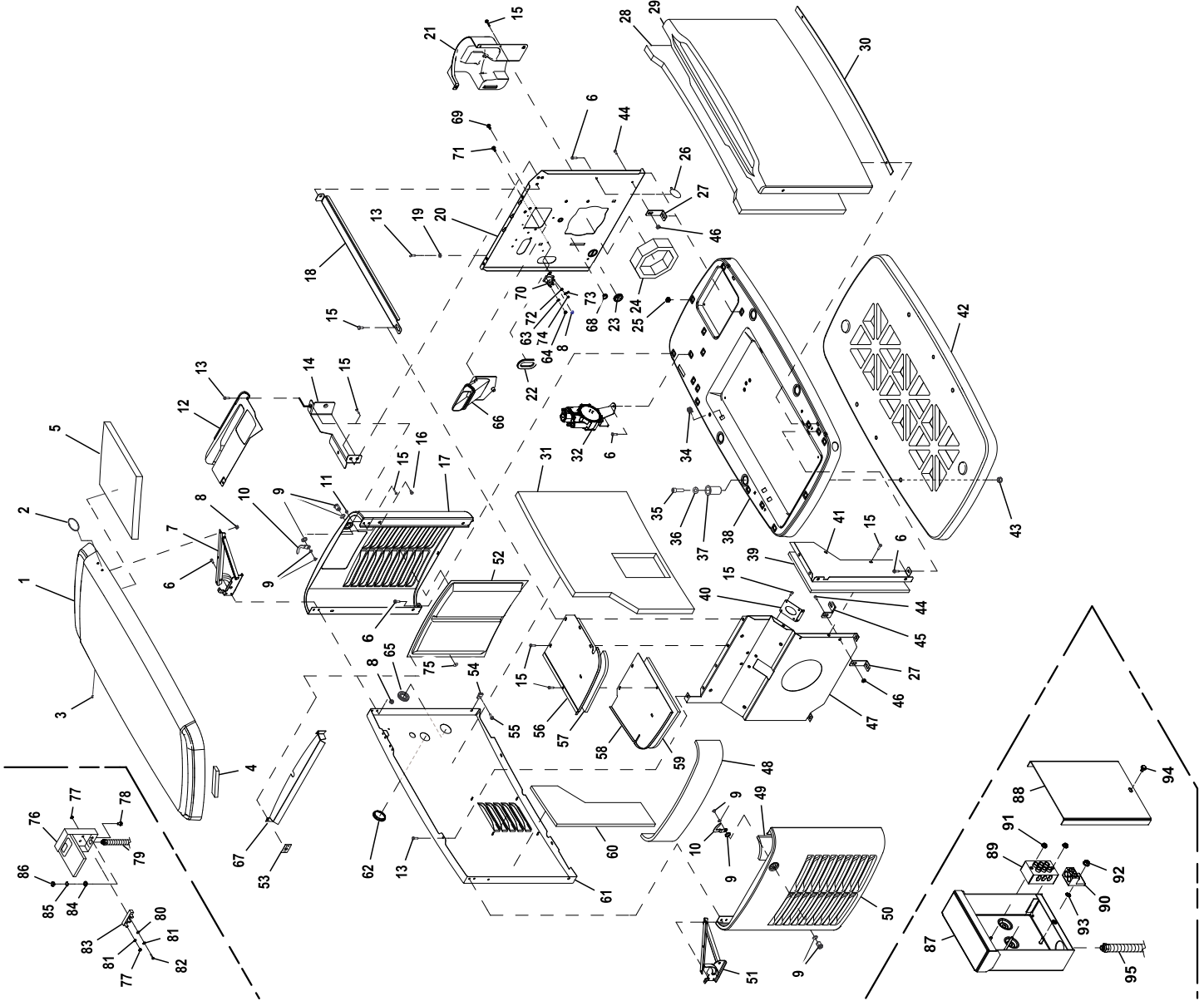


# GROUP EV



## EXPLODED VIEW: EV ECLOSURE HSB 2013

DRAWING #: 0J9964

## GROUP EV

| ITEM | PART#     | QTY.   | DESCRIPTION                                    |
|------|-----------|--------|--|
| 1    | 0J7633A   | 1      | ROOF ASSY GALV BISQUE                          |
|      | 0J7633E   | 1      | ROOF ASSY GALV GREY                            |
|      | 0J7633B   | 1      | ROOF ASSY ALUMINUM GREY                        |
|      | 0J7633D   | 1      | ROOF ASSY ALUMINUM BISQUE                      |
| 2    | 0G8160    | 1      | BADGE HOLDER - OVAL                            |
| 3    | 0G8131    | 1      | PLUG 6.35 BLACK                                |
| 4    | 0J7444    | 10.5FT | GASKET, EXTRUDED TRIM                          |
| 5    | 0G7774A   | 3      | FOAM, ENCLOSURE ROOF 1.00" THK                 |
| 6    | 0C8566    | 18     | SCREW HHFC M6-1.0 X 20 G8.8 (8-11, 16-22 KW)   |
|      | 0C8566    | 19     | SCREW HHFC M6-1.0 X 20 G8.8 (13-15 KW)         |
| 7    | 0J7098B   | 1      | HINGE ASSY INTAKE END                          |
| 8    | 0D3700    | 8      | NUT FLANGE M6-1.0 NYLOK (11-22 KW)             |
|      | 0D3700    | 10     | NUT FLANGE M6-1.0 NYLOK (8 KW)                 |
| 9    | 0G6624    | 2      | 1/4 TURN LOCKING LATCH                         |
| 10   | 0G6626    | 2      | 1/4 TURN LATCH PAWL                            |
| 11   | 052857    | 2      | NUT TOP LOCK FL M6-1.0                         |
| 12   | 0J8412B   | 1      | CONTROLLER FACIA (13-22 KW)                    |
|      | 0J8412A   | 1      | CONTROLLER FACIA (8-11 KW)                     |
| 13   | 0G4933B   | 5      | SCREW SWT 1/4-20 X 5/8                         |
| 14   | 0H6914    | 1      | BRACKET CTRL PNL FRONT (8-11 KW)               |
|      | 0H6915    | 1      | BRACKET CTRL PNL FRONT (13-22 KW)              |
| 15   | 090388    | 23     | SCREW HHTT M6-1.0 X 12 ZINC                    |
| 16   | 0G9386    | 2      | SPACER DOOR                                    |
| 17   | 0J7064A   | 1      | END PANEL, INTAKE                              |
| 18   | 0H7194    | 1      | CROSS SUPPORT HSB (8-11 KW)                    |
|      | 0H7195    | 1      | CROSS SUPPORT HSB(13-22 KW)                    |
| 19   | 0A1658    | 1      | WASHER LOCK SPECIAL 1/4"                       |
| 20   | 0J6873A   | 1      | PL ENG DIVIDER W/START 410 HSB (8 KW)          |
|      | 0J9483    | 1      | PANEL ENGINE DIVIDER HSB (11 KW)               |
|      | 0J6871B   | 1      | PANEL ENGINE DIVIDER HSB (13-22 KW)            |
| 21   | 0G8287    | 1      | INTAKE BAFFLE                                  |
| 22   | 0D3472    | 2      | GROMMET OVAL 31.75 X 50.8                      |
| 23   | 0E1330    | 1      | GROMMET, 38.1 DIA. CROSS SLIT                  |
| 24   | 0G7880    | 1      | FOAM DUCT, ENGINE DIVIDER (8 KW)               |
|      | 0F8434    | 1      | FOAM DUCT, ENGINE DIVIDER (11 KW)              |
|      | 0F8847    | 1      | FOAM DUCT, ENGINE DIVIDER (13-22 KW)           |
| 25   | 0G7225    | 17     | PANEL CLIP, M6-1.00 EXPANSION                  |
| 26   | 0G7225    | 1      | PUSHBUTTON WIRE TIE                            |
| 27   | 0H8713    | 4      | BRACKET L HSB DIVIDER PNL (13-17 KW ALUM)      |
|      | 0H8713    | 2      | BRACKET L HSB DIVIDER PNL (11, 20, 22 KW ALUM) |
| 28   | 0G7779    | 1      | FOAM, FRONT PANEL                              |
| 29   | 0G9377A   | 1      | ENCLOSURE FRONT PANEL                          |
| 30   | 0G7890    | 1      | GASKET, HSB DOOR SEAL                          |
| 31   | 0J6895    | 1      | FOAM, BACK PANEL                               |
| 32   | 0G7622G   | 1      | ASSY REGULATOR (8-11, 16-22 KW)                |
|      | 0J9045    | 1      | ASSY PRESSURE STABILIZER REG (13-15 KW)        |
| 33   |           |        |  |
| 34   | 0G7225A   | 6      | PANEL CLIP - 5/16-18 EXPANSION                 |
| 35   | 0H1958    | 4      | SCREW SHC 3/8-16 X1.25 W/PATCH                 |
| 36   | 022131    | 4      | WASHER FLAT 3/8-M10 ZINC                       |
| 37   | 0G7786A   | 4      | BUSHING, HSB ENCLOSURE BASE                    |
| 38   | 0J7706    | 1      | ENCLOSURE, BASE                                |
| 39   | 0G7843    | 1      | FOAM, FRONT EXHAUST SHIELD (13-17 KW)          |
|      | 0K7663    | 1      | FOAM, FRONT EXHST SHIELD (8, 11, 20, 22 KW)    |
| 40   | 0J6184A   | 1      | GASKET EXHAUST (8 KW)                          |
|      | SEE TABLE | 1      | GASKET EXHAUST (11 KW)                         |
|      | 0J7546A   | 1      | GASKET EXHAUST (13-17 KW)                      |
|      | 0J7546B   | 1      | GASKET EXHAUST (20, 22 KW)                     |
| 41   | 0G6623    | 1      | FRONT EXHAUST SHIELD (13-17 KW)                |
|      | 0G7421    | 1      | FRONT EXHAUST SHIELD (8, 11, 20, 22 KW)        |
| 42   | 0G6619A   | 1      | PAD MTG BASE W/HEX POCKETS                     |
| 43   | 022241    | 4      | NUT HEX 3/8-16 STEEL                           |
| 44   | 0C8563    | 4      | SCREW HHFC M6-1.0 X 12 G8.8 (11-22 KW ALUM)    |
| 45   | 0H8003    | 2      | BRACKET EXH PNL (11, 20, 22 KW ALUM)           |
| 46   | 0E8388    | 4      | NUT HEX FL WHIZ M6-1.0 (11-22 KW ALUM)         |

## EXPLODED VIEW: EV ECLOSURE HSB 2013

DRAWING #: 0J9964

## GROUP EV

| ITEM   | PART#     | QTY. | DESCRIPTION                                 |
|--|-----------|------|---|
| 47   | 0K3340D   | 1    | EXHST DVDR PNL (8-11 KW)                    |
|  | 0K3340B   | 1    | PANEL, EXHAUST DIVIDER (13-17 KW)           |
|  | 0K3340C   | 1    | PANEL, EXHAUST DIVIDER (20, 22 KW)          |
| 48   | 0G7775    | 1    | FOAM, EXHAUST END PANEL                     |
| 49   | 0G7775A   | 2    | FOAM, EXHAUST END PANEL SIDES               |
| 50   | 0J7064B   | 1    | ENCL END PANEL, EXHAUST SIDE                |
| 51   | 0J7098A   | 1    | HINGE ASSY EXHAUST END                      |
| 52   | 0G7258    | 2    | SCREEN - HSB LOUVERS                        |
| 53   | 0G8166    | 3    | WASHER SELF LOCKING-.106 STUD               |
| 54   | 0G7252    | 2    | CLIP U M6-1.0                               |
| 55   | 0G1705    | 2    | SCREW HHFC M6-1.0 X 14 G8.8                 |
| 56   | 0G6812    | 1    | COVER, FRONT EXHAUST ENCLOSURE              |
| 57   | 0G7778    | 1    | FOAM, TOP FRONT EXHAUST COVER               |
| 58   | 0G6811    | 1    | COVER, BACK EXHAUST ENCLOSURE               |
| 59   | 0G7776    | 1    | FOAM, TOP BACK EXHAUST COVER                |
| 60   | 0G7842    | 1    | FOAM, BACK PANEL, MUFFLER COMP              |
| 61   | 0J6994A   | 1    | ENCL BACK PNL HSB                           |
| 62   | 0J9137    | 1    | PLUG STEEL 1.750                            |
| 63   | 022264    | 2    | WASHER LOCK #8-M4 (8 KW)                    |
| 64   | 022471    | 2    | NUT HEX #8-32 STEEL (8 KW)                  |
| 65   | 0J7724    | 1    | GROMMET FUEL LINE 3/4"                      |
| 66   | 0J6878    | 1    | SNORKEL ENGINE AIR INTAKE                   |
| 67   | 0J7223    | 1    | DEFLECTOR                                   |
| 68   | 0E1534    | 1    | PLUG PLASTIC 0.687" (13-22 KW)              |
| 69   | 0G7717    | 3    | SCREW REDUCED HH HI-LO M6 X 10MM (11-22 KW) |
| 70   | 086729    | 1    | CONTACTOR, STARTER SOLENOID (8 KW)          |
| 71   | 043116    | 2    | SCREW HHC M6-1.0 X 12 G8.8 (8 KW)           |
| 72   | 022097    | 2    | WASHER LOCK M6-1/4 (8 KW)                   |
| 73   | 742600179 | 1    | WIRE ASSY SC TO SM 08 HSB (8 KW)            |
| 74   | 022127    | 2    | NUT HEX 1/4-20 STEEL (8 KW)                 |
| 75   | 0D7176    | 13   | WASHER SELF LOCKING 1"DIA 12GA              |
| <b><i>TO SERIAL# 8939014(8-11kW), 9002859(13-17kW)</i></b>   |           |      |   |
| 76   | 0H1536    | 1    | BOX ASSEMBLY-CUSTOMER CONN                  |
| 77   | 022158    | 5    | HEX NUT #10-32STEEL                         |
| 78   | 047411    | 1    | SCREW HHC M6-1.0 X 16 C8.8                  |
| 79   | 0K1577    | 1    | HARN GEN-EXT CONBOX (8-11 KW)               |
|  | 0K1578    | 1    | HARN GEN-EXT CONBOX (13-17 KW)              |
| 80   | 051713    | 2    | WASHER FLAT M5                              |
| 81   | 022152    | 5    | WASHER LOCK #10                             |
| 82   | 036937    | 2    | SCREW PPHM #10-32 X 1                       |
| 83   | 0C8911    | 1    | POWER BLOCK                                 |
| 84   | 026850    | 1    | WASHER LOCK EXT 1/4 STL                     |
| 85   | 022097    | 1    | WASHER LOCK M6-1/4                          |
| 86   | 049813    | 1    | NUT HEX M6-1.0 G8 CLEAR ZINC                |
| <b><i>FROM SERIAL# 8939015(8-11kW), 9002860(13-17kW)</i></b> |           |      |   |
| 87   | 0K4139    | 1    | ENCLOSURE CUSTOMER CONN                     |
| 88   | 0K4140    | 1    | COVER CUSTOMER CONN                         |
| 89   | 0K5550    | 1    | TERMINAL BLOCK 3 POSITION                   |
| 90   | 0K5469    | 1    | LUG SLDSS 1/0-14 (2) CONN                   |
| 91   | 0F4878    | 1    | NUT HEX FLANGE #10-32 ZINC                  |
| 92   | 0F7806    | 2    | NUT HEX FLANGE M4-0.7                       |
| 93   | 023762    | 1    | WASHER LOCK EXT #10 STEEL                   |
| 94   | 0A2111    | 1    | SCREW HHWS #10 - 32 X 5                     |
| 95   | 0K5982    | 1    | HARNES (8-11 KW)                            |
|  | 0K5616    | 1    | HARNES (13-17KW)                            |

**EXPLODED VIEW: EV ECLOSURE HSB 2013**

**DRAWING #: 0J9964**

**GROUP EV**

| <b>ITEM</b> | <b>PART#</b> | <b>QTY.</b> | <b>DESCRIPTION</b> |
|-------------|--------------|-------------|--------------------|
|-------------|--------------|-------------|--------------------|

| <b>11KW MODEL NUMBERS ENDING IN "0"</b> |             |            |                       |
|---|-------------|------------|-----------------------|
| <b>ITEM</b>                             | <b>PART</b> | <b>QTY</b> | <b>DESCRIPTION</b>    |
| 40                                      | 0J6184      | 1          | GASKET EXHAUST (11KW) |

| <b>11KW MODEL NUMBERS ENDING IN "1" OR GREATER</b> |             |            |                       |
|--|-------------|------------|-----------------------|
| <b>ITEM</b>  | <b>PART</b> | <b>QTY</b> | <b>DESCRIPTION</b>    |
| 40   | 0J6184A     | 1          | GASKET EXHAUST (11KW) |