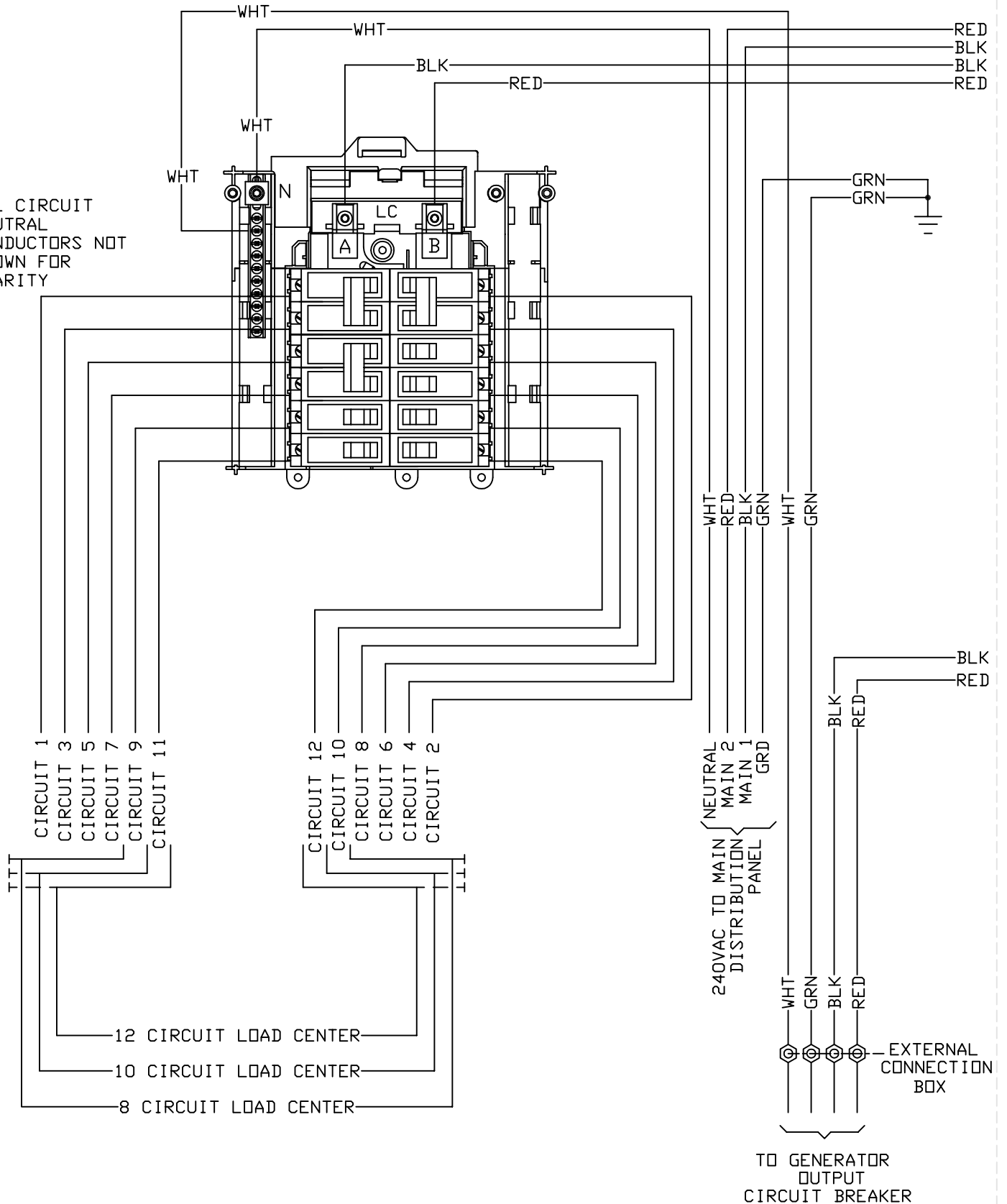
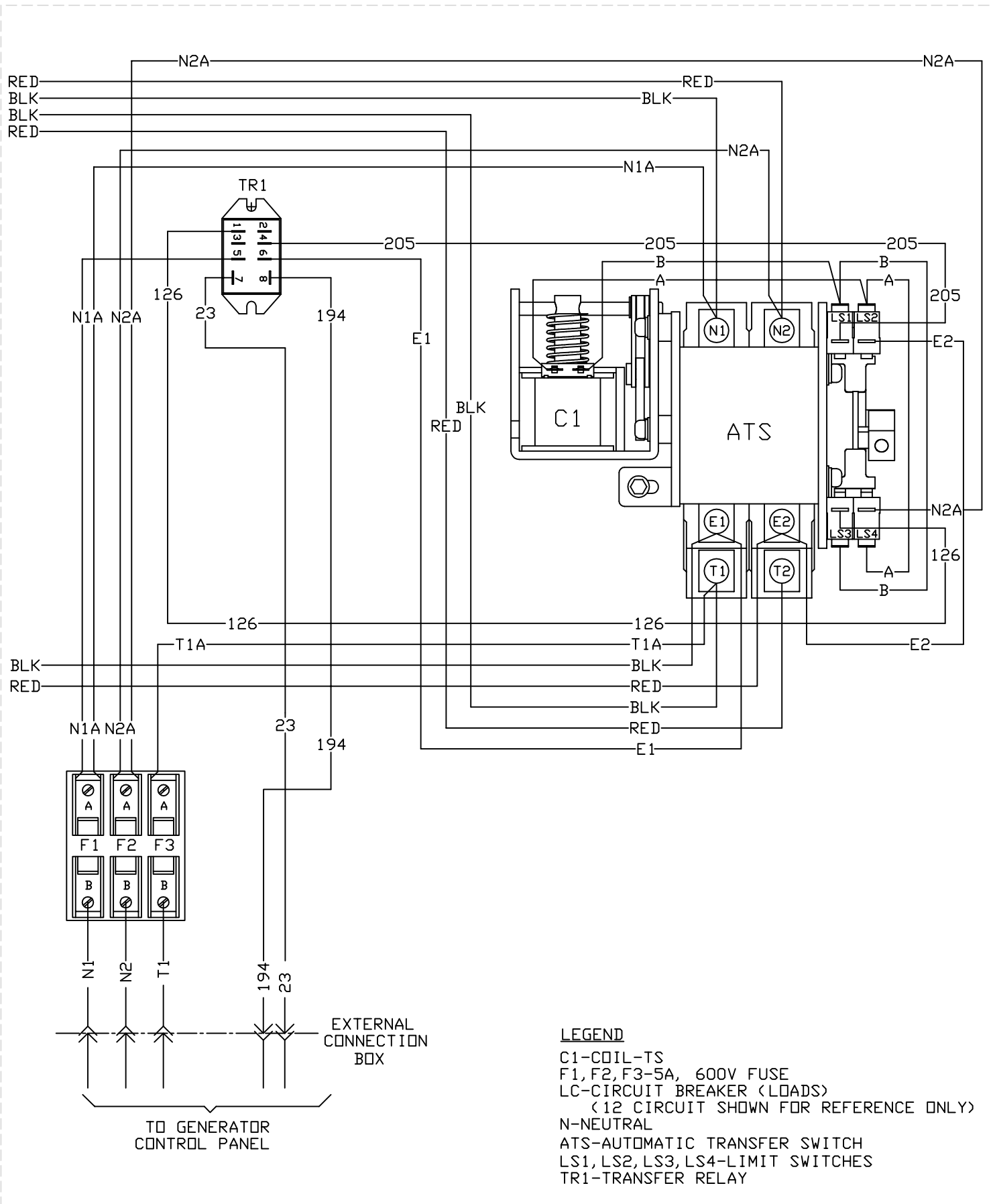


# GROUP G

ALL CIRCUIT  
NEUTRAL  
CONDUCTORS NOT  
SHOWN FOR  
CLARITY



# GROUP G



**LEGEND**  
 C1-COIL-TS  
 F1,F2,F3-5A, 600V FUSE  
 LC-CIRCUIT BREAKER (LOADS)  
 (12 CIRCUIT SHOWN FOR REFERENCE ONLY)  
 N-NEUTRAL  
 ATS-AUTOMATIC TRANSFER SWITCH  
 LS1,LS2,LS3,LS4-LIMIT SWITCHES  
 TR1-TRANSFER RELAY