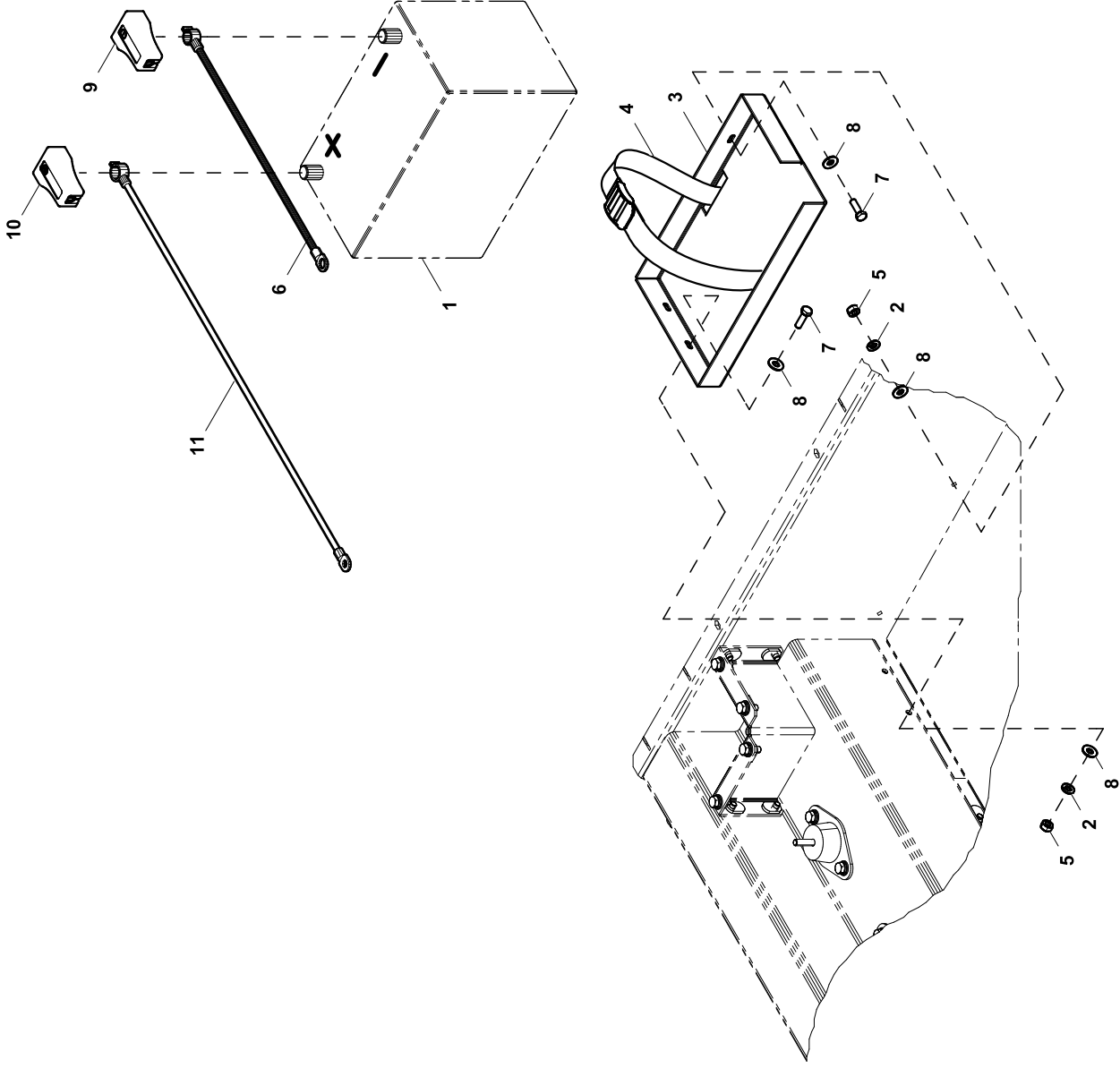


GROUP C



EXPLODED VIEW: EV BATTERY ACSRY D2.3L G16**DRAWING #: 0K4682****GROUP C**

ITEM	PART#	QTY.	DESCRIPTION
1	058665	1(REF)	BATT 12VDC 90-AH 27F
2	022097	4	WASHER LOCK M6-1/4
(1)3	0K52570ST0R	1	TRAY, BATTERY 27F, 2.3L RD RAW
4	0J3501	1	STRAP BATTERY 1.5X36"
5	049813	4	NUT HEX M6-1.0 G8 CLEAR ZINC
6	038805Y	1	CABLE BATT BLK #1 X 16.00 NEG
7	042568	4	SCREW HHC M6-1.0 X 20 C8.8
8	022473	8	WASHER FLAT 1/4-M6 ZINC
9	050331	1	BATT POST COVER BLK -
10	050331A	1	BATT POST COVER RED +
11	038804U	1	CABLE BATT RED #1 X 28.00
12	051756	1	SCREW HHC M10-1.5 X 20 C8.8
13	046526	1	WASHER LOCK M10
14	070264	1	WASHER FLAT M10
15	055934H	1	CLAMP STL/VNL .62 X .406 Z

NOTES (UNLESS OTHERWISE SPECIFIED):

(1) SHEET METAL PARTS LISTED IN THE BOM TABLE ARE REPRESENTING GENERIC PARTS (NO COLOR)

- MANUFACTURING: FOR CORRECT MATERIAL AND COLOR REFER TO AS400 BOM.
- CUSTOMER: WHEN ORDERING REPLACEMENT PARTS ENTER BASE NUMBER (FIRST 6 DIGITS ONLY) IN THE SYSTEM FOR CORRECT MATERIAL AND COLOR (FOR REFERENCE SEE GUIDELINE 0H7169).