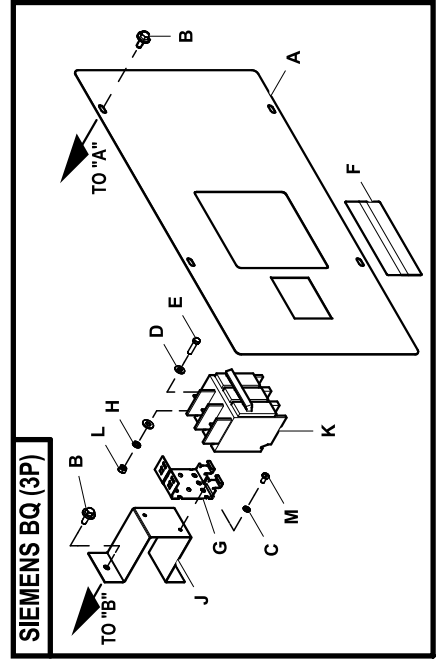
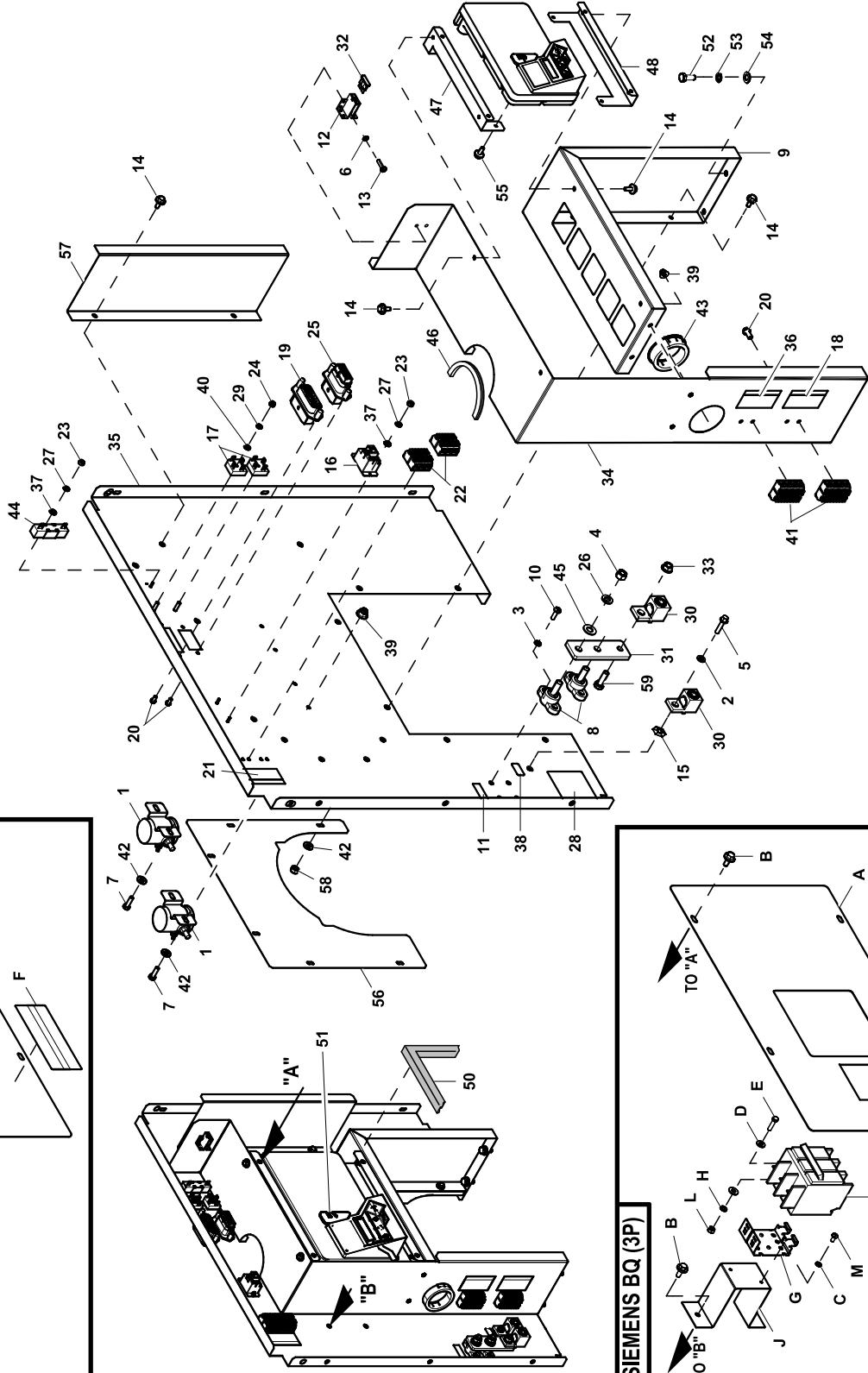
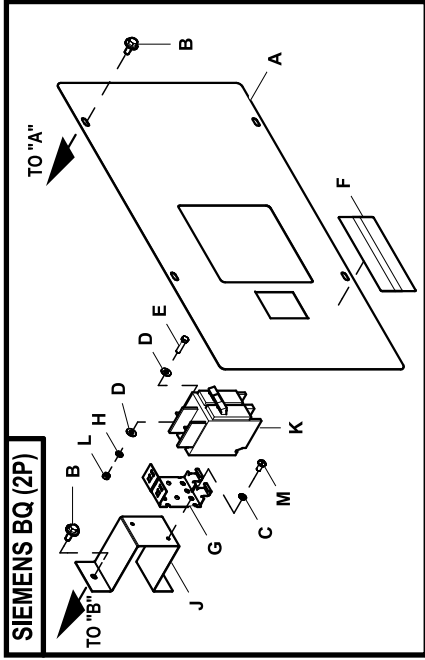


GROUP A



EXPLODED VIEW: EV CONNECTION BOX C1 CPL

DRAWING #:0K2496

GROUP A

ITEM	PART#	QTY.	DESCRIPTION
1	056739	2	RELAY SOLENOID 12VDC PNL MNT
2	022097	1	WASHER LOCK M6-1/4
3	022264	4	WASHER LOCK #8-M4
4	022241	2	NUT HEX 3/8-16 STEEL
5	0G3111	1	SCREW HHTT M6-1.0 X 25 ZINC
6	022155	2	WASHER LOCK #6
7	042568	4	SCREW HHC M6-1.0 X 20 C8.8
8	057073	2	JUNCTION BLOCK 3/8-16
9	0K2513	1	CONNECTION BOX RH SIDE C1 CPL
10	0C2265	4	SCREW PHTT M4-0.7 X 12 ZP
11	0A9457	1	DECAL, NEUTRAL
(2)12	0F1262	1(REF)	HOLDER FUSE WICKMANN ATO STYLE
	0F1263	1(REF)	ADAPTER RH SIDE WICKMANN
	0F1264	1(REF)	ADAPTER LH SIDE WICKMANN
13	0C2428	2	SCREW PHTT #6-32 X 1/2 ZYC
14	0C2454	13	SCREW HWHT M6-1 X 16 N WA Z/JS
15	0A1658	1	WASHER LOCK SPECIAL 1/4"
16	0C2174	1	RELAY 12V 25A SPST
17	0D7177V	2	DIODE BRIDGE 1P 35A 1000V
18	0K3246	1	DECAL TB2&TB3 CUST CONNECTIONS
(2)19	0F540500AR	1(REF)	MX150L RRMNT PLG 16P W/O G A
20	0F5458	8	SCREW HHSP #10 X 3/8 HI-LOW
21	0H7293	1	DECAL CONBOX TB1 CONNECTIONS
(2)22	0D7393T	2(REF)	TERM BLOCK 3P UL 12-20AWG
23	051714	3	NUT HEX M3-0.5 G8 CLEAR ZINC
24	051716	2	NUT HEX M5-0.8 G8 CLEAR ZINC
(2)25	0F5396S0AR	1(REF)	MX150L SLRRMNT 22-18 12P W/OGA
26	022237	2	WASHER LOCK 3/8
27	043182	3	WASHER LOCK M3
28	0H8006	1	DECAL CAUTION ELEC SHOCK SM
29	049226	2	WASHER LOCK M5
30	0F8451	2	LUG SLDLSS 300 MCM-6 AL/CU
31	0H9690	1	BUS BAR NTRL BLK 15-250A
(2)32	0E7403C	1(REF)	FUSE ATO TYPE 15 AMP (BLUE)
33	067989	1	NUT HEX FL WHIZ M8-1.25
34	0K2514	1	CONNECTION BOX CENTER C1 CPL
35	0K2511	1	CONNECTION BOX LH SIDE C1
36	0K3838	1	DECAL CUST POWER CONNECTION
37	052777	3	WASHER FLAT M3
38	067210A	1	DECAL GROUND LUG
39	0D3700	6	NUT FLANGE M6-1.0 NYLOK
40	051713	2	WASHER FLAT M5
(2)41	0D7393U	2(REF)	TERM BLOCK 4P UL 12-20AWG
42	022473	10	WASHER FLAT 1/4-M6 ZINC
43	023484N	1	BUSHING SNAP SB-2.5-31
44	0F5752J	1	RES WW 10R 5% 25W QK CONN
45	022131	2	WASHER FLAT 3/8-M10 ZINC
46	056326	1	TRIM VINYL BLACK 1/8GP
47	0K3257	1	CONTROLLER TOP STANDOFF
48	0K3258	1	CONTROLLER BOTTOM STANDOFF
49	0K2267B	1	ASSY CONTROLLER COMPACT DIESEL
50	052250	1	TAPE FOAM 1X1 (43" LG)
(3)51	0D7178T	1(REF)	FUSE ATO TYPE 7.5AMP (BROWN)
52	039253	8	SCREW HHC M8-1.25 X 20 C8.8
53	022129	8	WASHER LOCK M8-5/16
54	022145	8	WASHER FLAT 5/16-M8 ZINC
55	090388	4	SCREW HHTT M6-1.0 X 12 ZINC
56	0K5538	1	WATER BLOCK OFF ALTERNATOR
57	0K5555	1	DEFLECTOR RAIN AIR INTAKE
58	077992	6	NUT HEX LOCK M6-1.0 SS NY INS
59	043107	1	SCREW HHC M8-1.25 X 25 C8.8

EXPLODED VIEW: EV CONNECTION BOX C1 CPL

DRAWING #:0K2496

GROUP A

ITEM	PART#	QTY.	DESCRIPTION
SIEMENS BQ (2P)			
(1)A	0K3142AST0R	1	CONN BOX CONTROL COVER PANEL 2P
B	0C2454	6	SCREW HWHT M6-1 X 16 N WA Z/JS
C	022264	2	WASHER LOCK #8-M4
D	023897	4	WASHER FLAT #10 ZINC
E	052619	2	SCREW HHC M5-0.8 X 20 G8.8
F	0G3259	1	DECAL TERMINAL SHOCK HZD BI
G	0E7890	1	BRKT CB MTG BACK
H	049226	2	WASHER LOCK M5
J	0K3089	1	CIRCUIT BREAKER STANDOFF C1
K	0D5544	1	CB 0100A 2P 240V S BQ2 LL
	0D5541	1	CB 0070A 2P 240V S BQ2 LL
L	051716	2	NUT HEX M5-0.8 G8 CLEAR ZINC
M	0G9708	2	SCREW PHTT M4-0.7 X 8 ZP
SIEMENS BQ (3P)			
(1)A	0K31420ST0R	1	CONN BOX CONTROL COVER PANEL 3P
B	0C2454	6	SCREW HWHT M6-1 X 16 N WA Z/JS
C	022264	2	WASHER LOCK #8-M4
D	023897	4	WASHER FLAT #10 ZINC
E	052619	2	SCREW HHC M5-0.8 X 20 G8.8
F	0G3259	1	DECAL TERMINAL SHOCK HZD BI
G	0E7890	1	BRKT CB MTG BACK
H	049226	2	WASHER LOCK M5
J	0K3089	1	CIRCUIT BREAKER STANDOFF C1
K	049942	1	CB 0050A 3P 240V S BQ3 LL
	040533	1	CB 0060A 3P S 240V BQ3 LL
	049135	1	CB 0070A 3P 240V S BQ3 LL
	062812	1	CB 0080A 3P 240V S BQ3 LL
L	051716	2	NUT HEX M5-0.8 G8 CLEAR ZINC
M	0G9708	2	SCREW PHTT M4-0.7 X 8 ZP

NOTES (UNLESS OTHERWISE SPECIFIED):

(1) SHEET METAL PARTS LISTED IN THE BOM TABLE ARE REPRESENTING GENERIC PARTS (NO COLOR)

- MANUFACTURING: FOR CORRECT MATERIAL AND COLOR REFER TO AS400 BOM.
- CUSTOMER: WHEN ORDERING REPLACEMENT PARTS ENTER BASE NUMBER (FIRST 6 DIGITS ONLY) IN THE SYSTEM FOR CORRECT MATERIAL AND COLOR (FOR REFERENCE SEE GUIDELINE 0H7169).

(2) ITEM INCLUDED WITH HARNESS P/N 0K2566.

(3) ITEM INCLUDED WITH CONTROLLER P/N 0K2267B.

EXPLODED VIEW: EV CONNECTION BOX C1 CPL

DRAWING #:0K2496

GROUP A

ITEM	PART#	QTY.	DESCRIPTION
-------------	--------------	-------------	--------------------

This page left blank intentionally