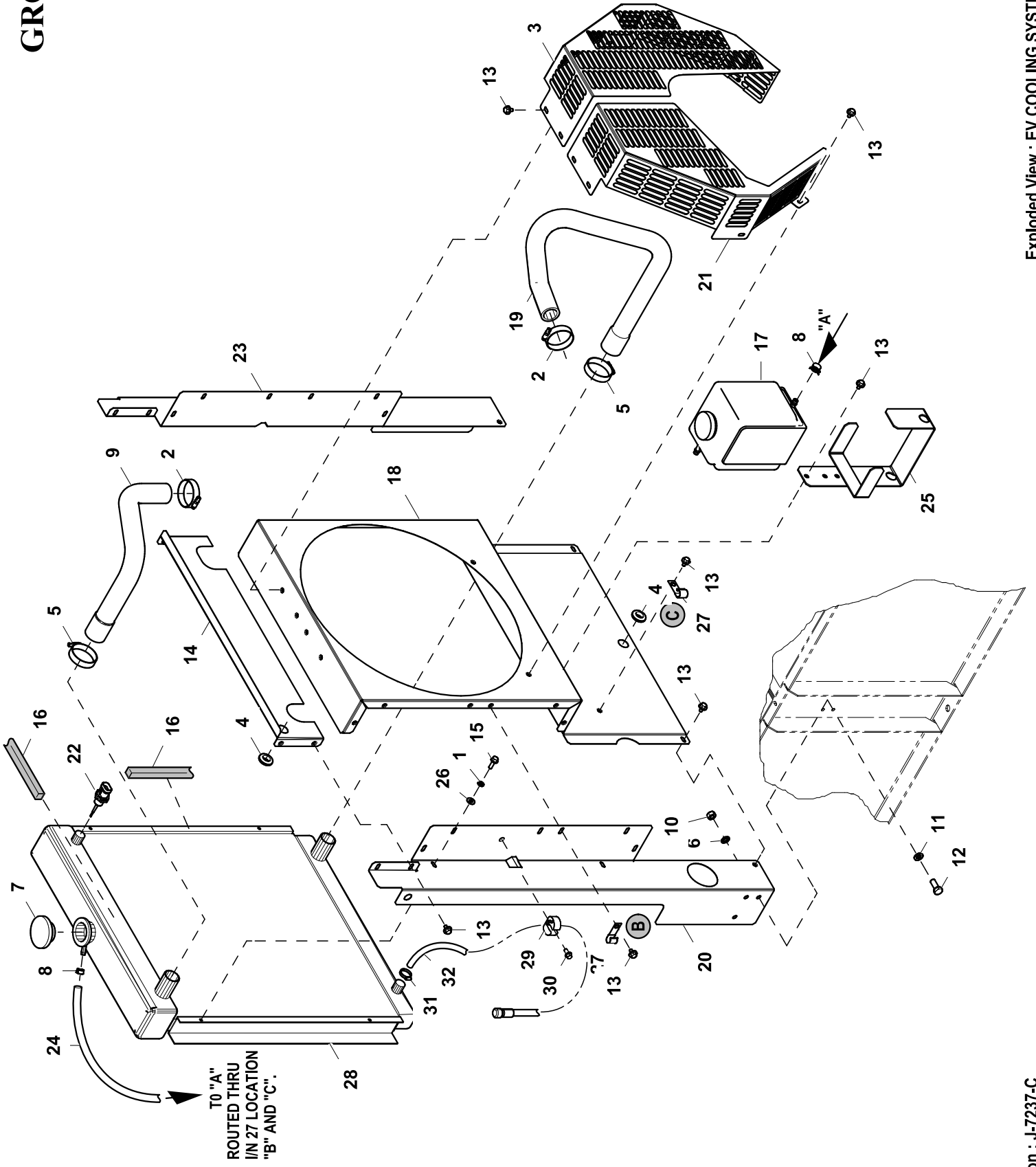


GROUP D



EXPLODED VIEW: EV COOLING SYSTEM D2.3L G16**DRAWING #: 0K2191****GROUP D**

ITEM	PART#	QTY.	DESCRIPTION
1	022097	4	WASHER LOCK M6-1/4
2	057824	2	CLAMP HOSE #16 .87-1.50
3	0K2303	1	GUARD FAN RH D2.3L G16
4	0F9504	2	GROMMET 5/8"X 1 1/8"X 5/16"
5	099502	2	CLAMP HOSE #24 B1.06-2.00
6	027482	6	WASHER LOCK EXT 5/16 STL
7	0E4162	1	CAP RADIATOR 20 PSI
8	048031C	2	CLAMP HOSE BAND .50
9	0K2226	1	HOSE UPPER RADIATOR D2.3L G16
10	045771	6	NUT HEX M8-1.25 G8 CLEAR ZINC
11	022129	6	WASHER LOCK M8-5/16
12	039253	6	SCREW HHC M8-1.25 X 20 C8.8
13	0C2454A	26	SCREW HWHT M6-1 X 12 N WA Z/JS
14	0K5588	1	BLOCK OFF, RADIATOR 2.3L
15	0C8566	4	SCREW HHFC M6-1.0 X 20 G8.8
16	052250	4	TAPE FOAM 1X1 (83"LG)
17	076749	1	TANK COOLANT RECOVERY
18	0K2188	1	VENTURI D2.3L G16
19	0K2225	1	HOSE LOWER RADIATOR D2.3L G16
20	0K2189	1	SUPPORT RADIATOR LH SIDE D2.3L G16
21	0K2302	1	GUARD FAN LH D2.3L G16
22	0H1827	1	PROBE COOLANT LEVEL 3/8-18NPTF
23	0K2190	1	SUPPORT RADIATOR RH SIDE D2.3L G16
24	029032	1	HOSE 9/32 ID (47"LG)
25	080713	1	BRKT COOLANT TANK
26	022473	4	WASHER FLAT 1/4-M6 ZINC
27	082121A	2	CLIP-J VINYL COAT .375 ID
28	0E9837C	1	RADIATOR 2.4L G2
29	065852	1	SPRING CLIP HOLDER .37-.62
30	045764	1	SCREW HHTT M4-0.7 X 8 ZP
31	0C7649	1	CLAMP HOSE .38-.87
32	069860C	1	HOSE OIL DRAIN ASSY 21"