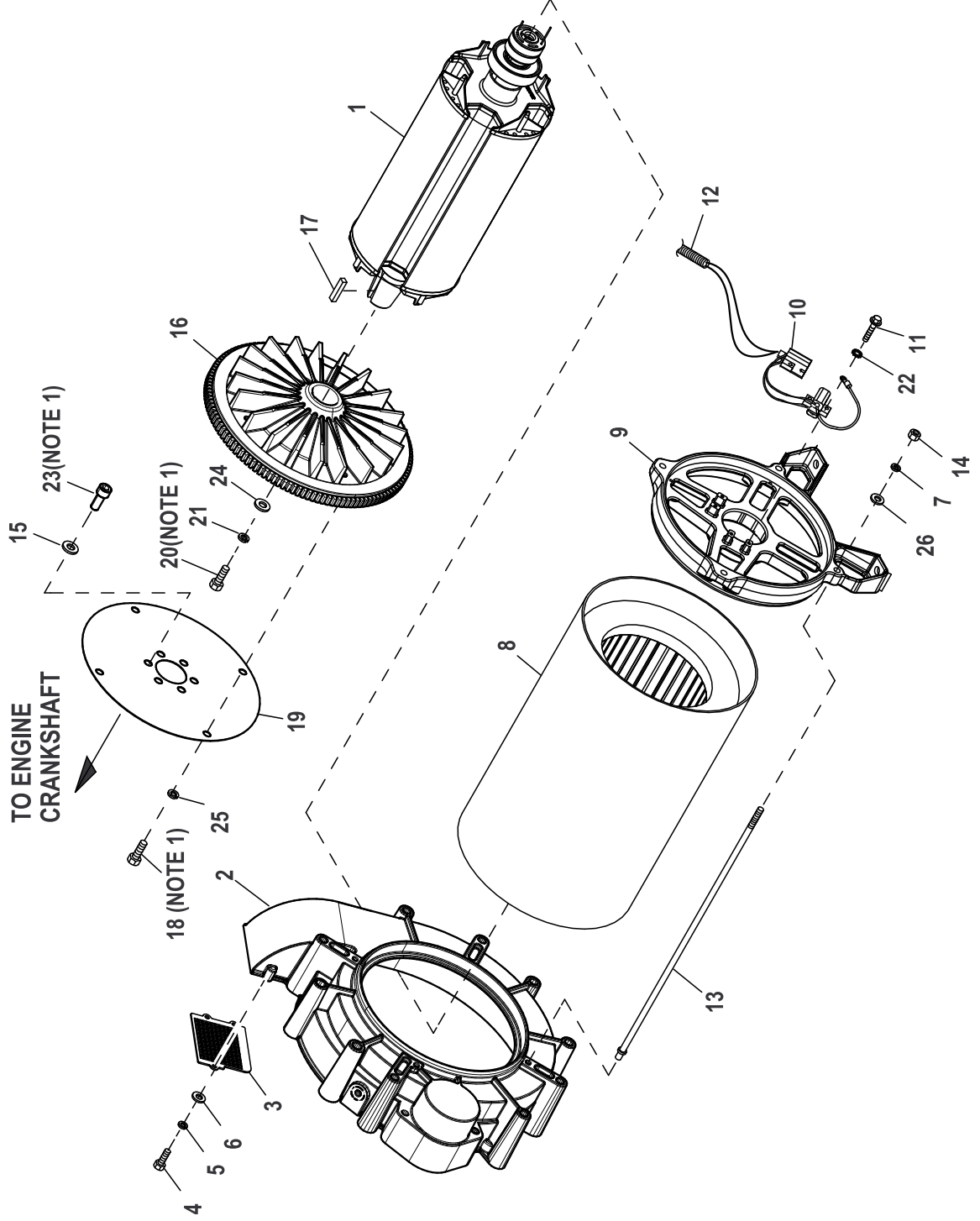


GROUP A

I/N	QTY	TORQUE POUND-FEET (KPM)	NOTES
20	1	56 (8)	
23	10	45 (6)	CRISS-CROSS PATTERN



EXPLODED VIEW: EV ALT COMMON PARTS

DRAWING #: 0K2116

GROUP A

ITEM	PART#	QTY.	DESCRIPTION
1	0K1553	1	RTR-104-15 AD1 HI EFF AL CAGE
	0K1555	1	RTR-104-20AD1 HI EFF AL CAGE
	0K3450	1	RTR-104-20GD1 HI EFF AL CAGE (APPLICABLE TO 15 & 20KW G AND J VOLTAGE CODES)
2	0K1937B	1(REF)	HOUSING BLOWER MACHINED D2.3L
3	0G8366	1(REF)	BLOWER HOUSING SCREEN
4	020746	3(REF)	SCREW PPHM M5-0.8 X 8 ZINC
5	049226	3(REF)	WASHER LOCK M5
6	051713	3(REF)	WASHER FLAT M5
7	022129	4	WASHER LOCK M8-5/16
8	0K1552	1	STR-104-15AD1 HI-EFF
	0K1554	1	STR-104-20AD1 HI EFF
	0K3448	1	STR-104-20GD1 HI EFF (APPLICABLE TO 15 & 20KW G VOLTAGE CODES)
	0K3449	1	STR-104-20JD1 HI EFF (APPLICABLE TO 15 & 20KW J VOLTAGE CODES)
	0K4327	1	STR-104-16MD1 50HZ HI EFF
9	0A5382A	1	BEARING CARRIER REAR LG PILOT
10	075591	1	HOLDER BRUSH - ASSEMBLY
11	051787	4	SCREW HHC M4-0.7 X 16 C8.8
12	077043A	1	CONDUIT FLEX .38"ID (18" LG)
13	0G8827A	4	STUD M8-1.25 418 LONG (22KW)
14	045771	4	NUT HEX M8-1.25 G8 CLEAR ZINC
15	070264	6(REF)	WASHER FLAT M10
16	0K1961	1	FLYWHEEL & RINGGEAR ASSY D2.3L
17	042558	1	KEY SQ 3/8 X 1 STEEL
(1) 18	051756	4	SCREW HHC M10-1.5 X 20 C8.8
19	0K1974	1(REF)	PLATE FLEX D2.3L G16
(1) 20	053607	1	SCREW HHC M12-1.75 X 35 G8.8
21	051769	1	WASHER LOCK M12
22	023365	4	WASHER LOCK INT #8
(1) 23	0E3495	6(REF)	SCREW SHC M10-1.25 X 25 G12.9
24	072578	1	SPACER ROTOR SHAFT
25	0D8427	4	WASHER LOCK M10 RIBBED ZINC
26	0A8830	4	WASHER FLAT .34 ID X .75 OD
27	029333A	7	TIE WRAP UL 7.4"X .19" BLK (NOT SHOWN)
28	077043C	1	CONDUIT FLEX .75"ID (18" LG) (NOT SHOWN)

NOTES(UNLESS OTHERWISE SPECIFIED):

(1) APPLY MEDIUM STRENGTH BLUE THREADED LOCKING FLUID TO THREADS.