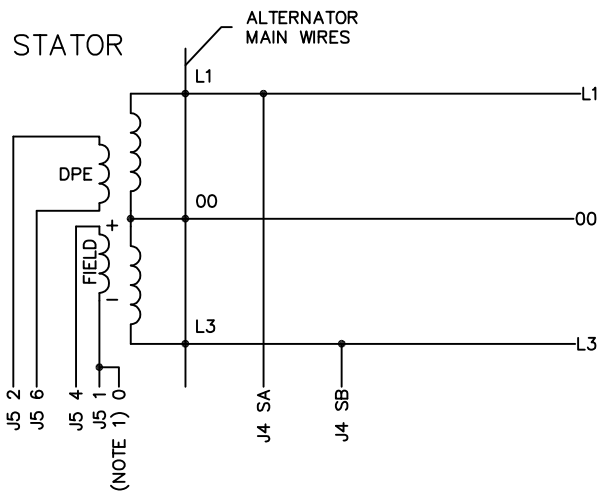
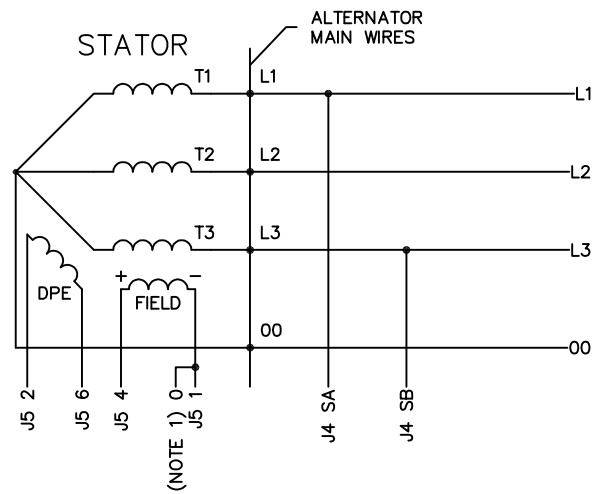


## LEGEND

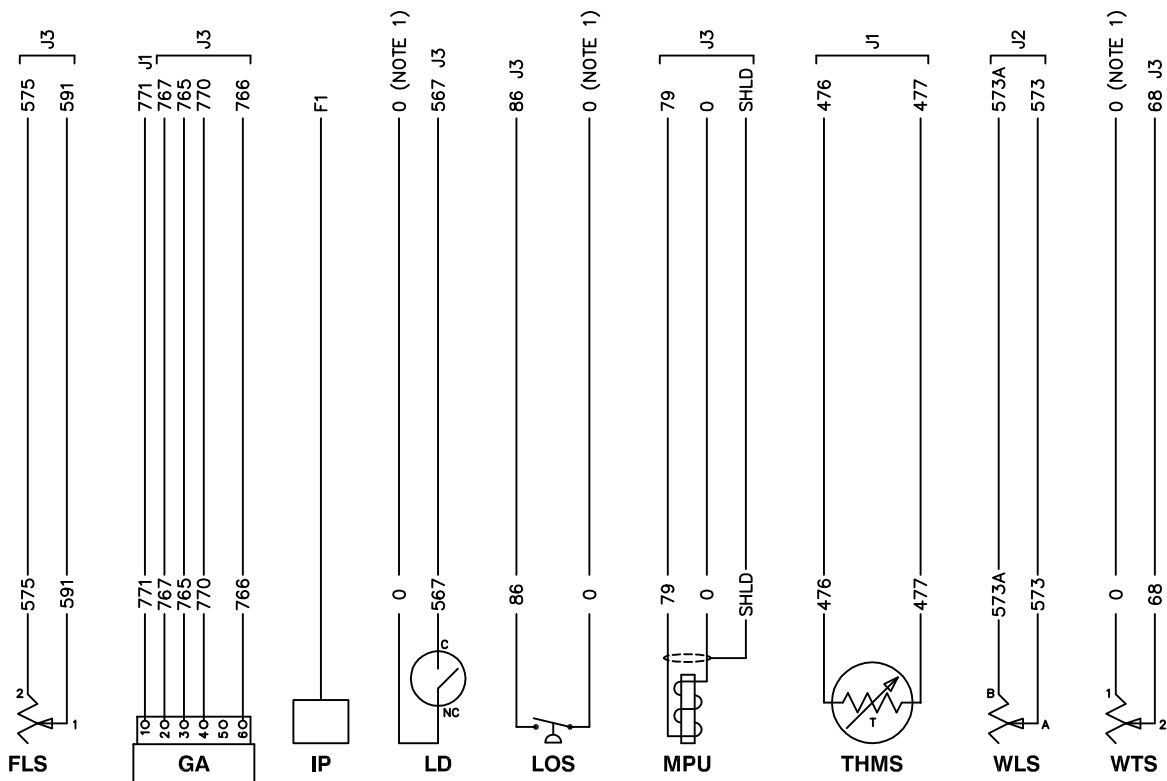
00 - NEUTRAL	F_ - FUSE	LOS - LOW OIL PRESSURE SWITCH	SM - STARTER MOTOR
ALT - DC CHARGE ALTERNATOR	FLS - FUEL LEVEL SENDER	MLCB - MAIN LINE CIRCUIT BREAKER	THMS - THERMISTOR
BAT - BATTERY	GA - GOVERNOR ACTUATOR	MPU - MAGNETIC PICKUP	WLS - COOLANT LEVEL SENSOR
BCH - BATTERY CHARGER	GP - GLOW PLUG	PHC - PREHEAT CONTACTOR	WTS - COOLANT TEMPERATURE SENSOR
DB_ - DIODE BRIDGE	IP - INJECTION PUMP	R - RESISTOR	
DPE - EXCITER	J_ - MAIN CONTROLLER CONN.	RLY - CONTROL RELAY	
ES_ - EMERGENCY STOP SWITCH	LD - LEAK DETECTOR	SC - STARTER CONTACTOR	

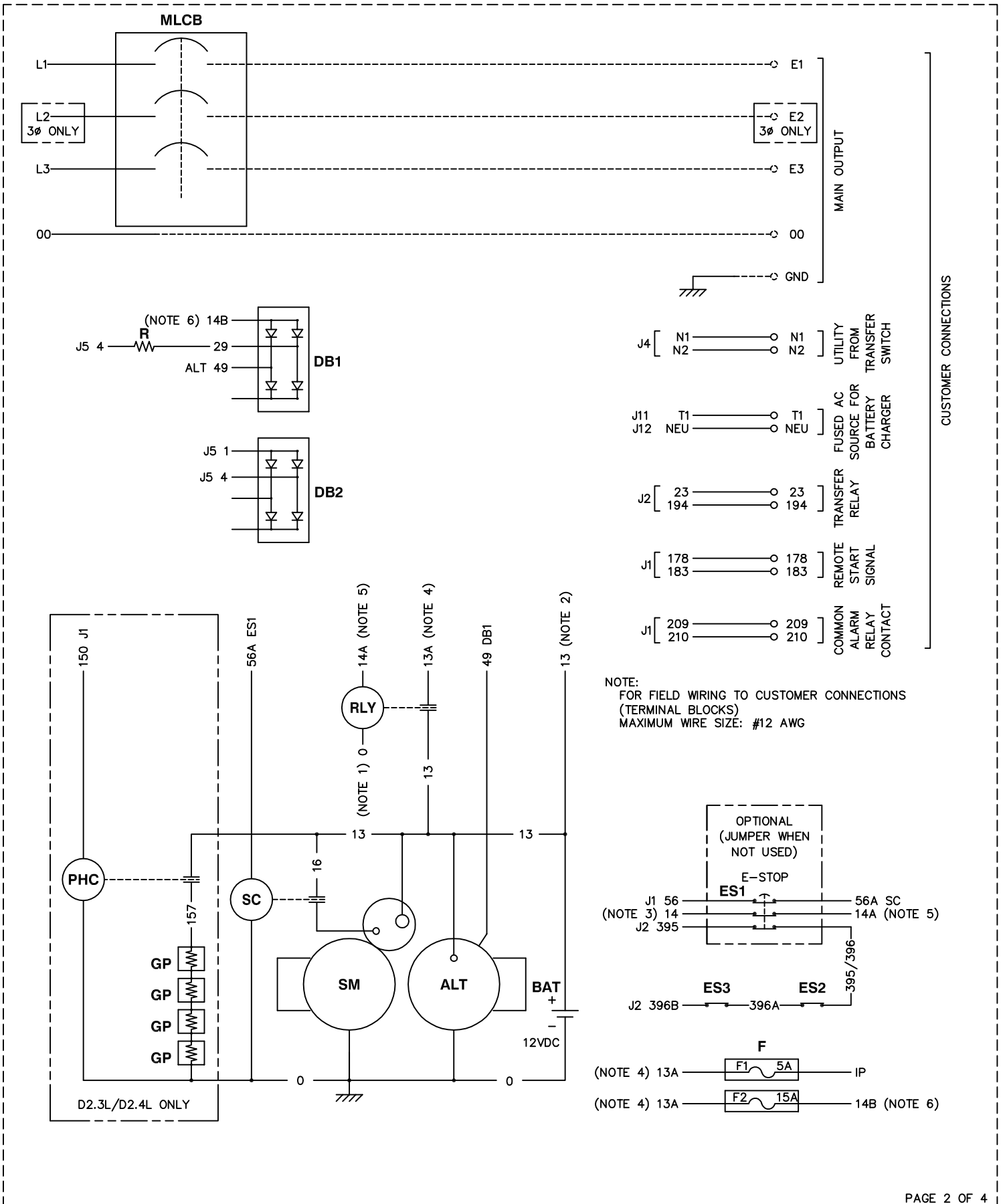


ALTERNATOR CONNECTIONS FOR 1φ UNITS



ALTERNATOR CONNECTIONS FOR 3φ UNITS





NOTES:

- 1) WIRE# 0 IS CHASSIS GROUND (BATTERY-) UNLESS NOTED OTHERWISE.
- 2) WIRE# 13 IS UNFUSED +12VDC (BATTERY+).
- 3) WIRE# 14 IS FUSED +12VDC WHEN GENERATOR IS CRANKING OR RUNNING.
- 4) WIRE #13A IS UNFUSED +12VDC (BATTERY+) WHEN GENERATOR IS CRANKING OR RUNNING AND E-STOP IS NOT ACTIVATED.
- 5) WIRE# 14A IS LOW CURRENT FUSED +12VDC WHEN GENERATOR IS CRANKING OR RUNNING AND E-STOP IS NOT ACTIVATED.
- 6) WIRE# 14B IS HIGH CURRENT FUSED +12VDC WHEN GENERATOR IS CRANKING OR RUNNING AND E-STOP IS NOT ACTIVATED (FUSED 13A).

MAIN CONTROLLER CONNECTIONS

J1

PIN	WIRE	TO	FUNCTION
1	13	BATTERY+	NOTE 2
2	13	BATTERY+	NOTE 2
3	56	ES1	STARTER OUTPUT
4	0	GND	NOTE 1
5	183	CUST CON	REMOTE START
6	194	CUST CON	TRANSFER RELAY COIL +
7	23	CUST CON	TRANSFER RELAY COIL CONTROL
8	209	CAR	COMMON ALARM
9	14	ES1	NOTE 3
10	771	GA-1	THROTTLE DRIVE LO
11	476	THMS	THERMISTOR (BATTERY CHARGER)
12	477	THMS	THERMISTOR (BATTERY CHARGER)
14	178	CUST CON	REMOTE START
15	210	CAR	COMMON ALARM
16	150	PHC	PREHEAT

J2

PIN	WIRE	TO	FUNCTION
4	396	ES1	E-STOP RETURN
6	SHLD*	EGC (CUT)	CAN COMMUNICATION SHIELD
8	395	ES1	E-STOP SOURCE
9	573	WLS-A	COOLANT LEVEL SIGNAL
10	573A	WLS-B	COOLANT LEVEL SIGNAL RETURN
11	743*	EGC J1-7	CAN COMMUNICATION HIGH
12	744*	EGC J1-6	CAN COMMUNICATION LOW

\*CAN COMMUNICATION AND ELECTRONIC GOVERNOR RELAY WIRES ARE NOT USED ON D2.3L, D2.4L, D3.4L, USED ON D2.2L ONLY.

J3

PIN	WIRE	TO	FUNCTION
1	SHLD	MPU-1	FLYWHEEL SENSOR DRAIN
4	591	FLS-1	FUEL LEVEL RTN
5	575	FLS-2	FUEL LEVEL +
6	68	WTS-2	COOLANT TEMP SIGNAL
7	765	GA-3	THROTTLE POSITION FEEDBACK SOURCE
8	766	GA-6	THROTTLE POSITION FEEDBACK SIGNAL
9	770	GA-4	THROTTLE DRIVE HI
10	79	MPU-3	MPU SIGNAL (+)
11	0	MPU-2	MPU SIGNAL (-)
13	567	LD	LEAK DETECTOR
14	575	FLS-2	FUEL LEVEL +
15	86	LOS-NC	LOW OIL PRESSURE SIGNAL
18	767	GA-6	THROTTLE POSITION FEEDBACK RETURN

J4

PIN	WIRE	TO	FUNCTION
1	SA	MLCB	OUTPUT VOLTAGE SENSING A
3	N1	CUST CON	UTILITY VOLTAGE SENSING 1
4	SB	MLCB	OUTPUT VOLTAGE SENSING B
6	N2	CUST CON	UTILITY VOLTAGE SENSING 2

J5

PIN	WIRE	TO	FUNCTION
1	2	DPE	EXCITER OUTPUT
2	1	FIELD	FIELD (BRUSH) -
3	6	DPE	EXCITER RETURN
4	4	FIELD	FIELD (BRUSH) +

J13

PIN	WIRE	TO	FUNCTION
6	25*	EGCR-85	ELECTRONIC GOVERNOR RELAY COIL +

PAGE LEFT INTENTIONALLY BLANK