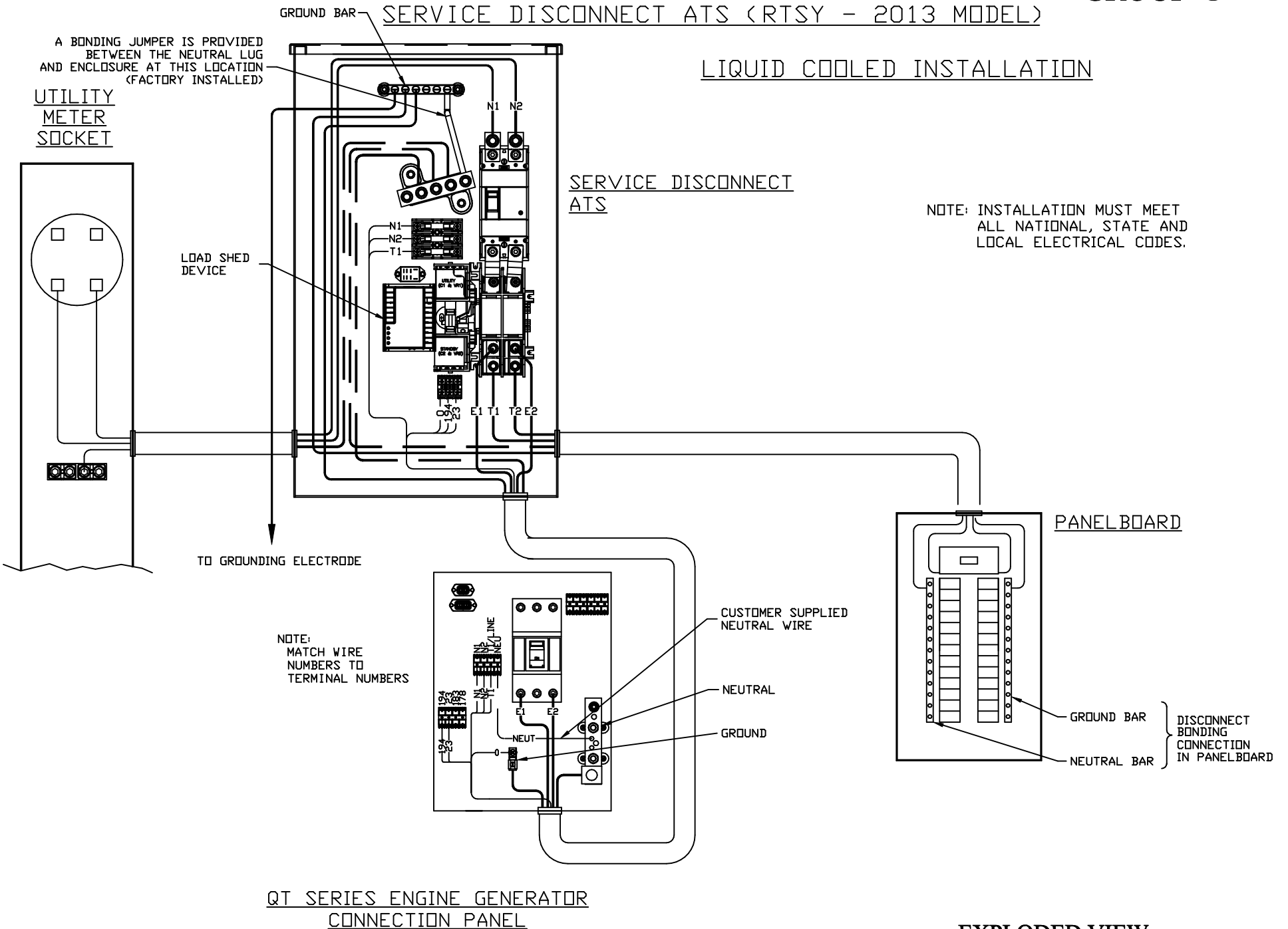


SERVICE DISCONNECT ATS (RTSY - 2013 MODEL)

LIQUID COOLED INSTALLATION



NOTE: INSTALLATION MUST MEET ALL NATIONAL, STATE AND LOCAL ELECTRICAL CODES.

**EXPLODED VIEW: RTS XFER SW INTERCONNECTIONS**

**DRAWING #: 0K2425**

**APPLICABLE TO:**

**GROUP G**

**THIS PAGE IS LEFT INTENTIONALLY BLANK**