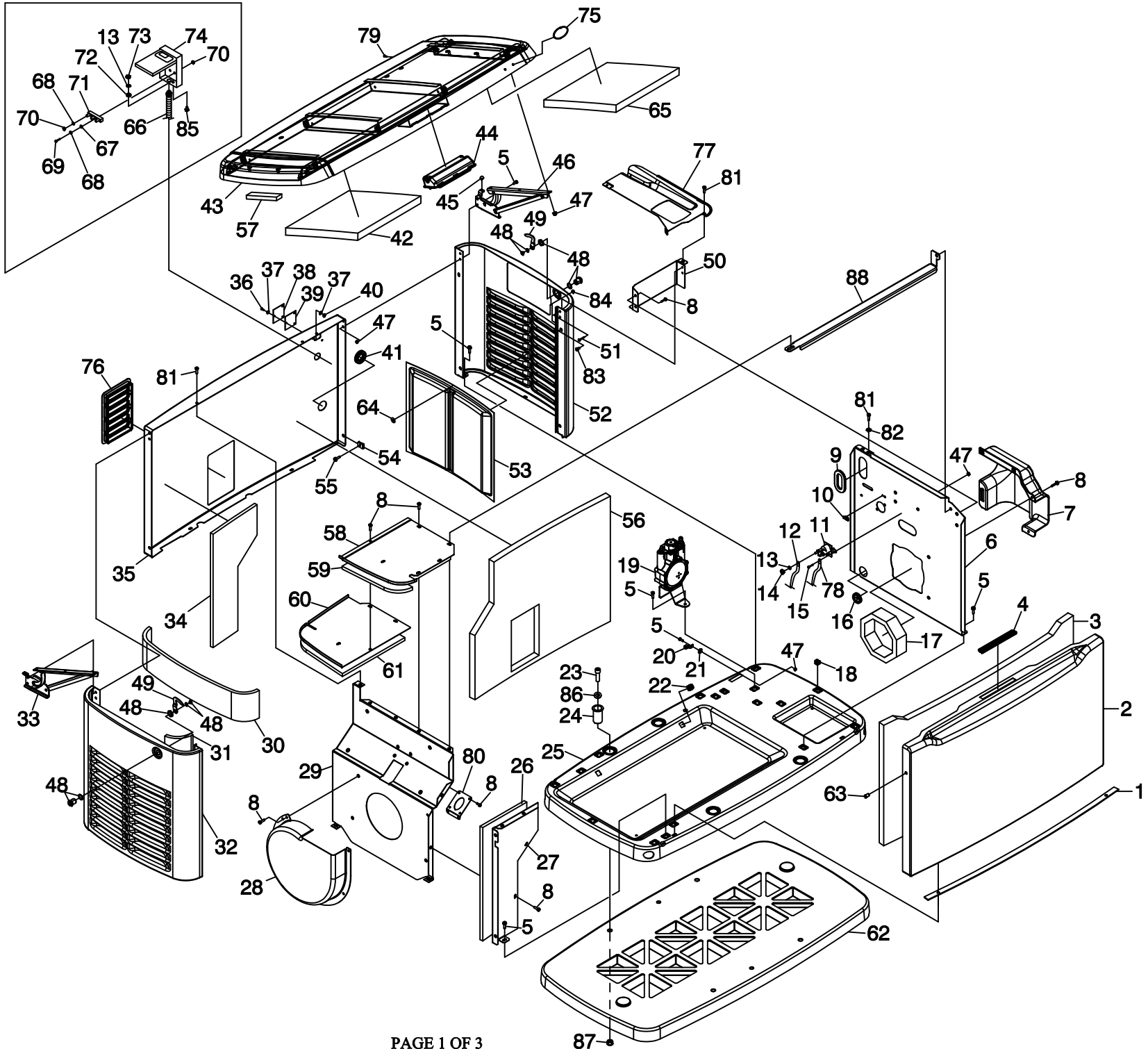


PRE PACKAGED UNITS ONLY



**EXPLODED VIEW: ENCLOSURE  
DRAWING #: 0G7851**

**APPLICABLE TO: 2008 HSB**

ITEM	PART #	QTY.	DESCRIPTION
1	0G7890	1	GASKET, DOOR SEAL
2	SEE SHEET 3		
3	0G7779	1	FOAM, FRONT PANEL ENCLOSURE
4	SEE SHEET 3		
5	0C8566	18	SCREW HHFC M6-1.0 X 20 (8KW, 10KW)
	0C8566	19	SCREW HHFC M6-1.0 X 20
6	0G6617	1	PANEL, ENGINE DIVIDER (8KW)
	0G6620	1	PANEL, ENGINE DIVIDER (10KW)
	0G6615	1	PANEL, ENGINE DIVIDER
7	0G7240	1	BAFFLE, INTAKE (8KW, 10KW)
	0G8287	1	BAFFLE, INTAKE
8	SEE SHEET 3		
9	0D3472	1	GROMMET OVAL 31.75 X 50.8 (8KW)
	0D3472	2	GROMMET OVAL 31.75 X 50.8
10	0F8039	1	MOUNTING CLIP
11	086729	1	CONTACTOR, STARTER (8KW)
12	0388040AJ0	1	CABLE, #6 RED BATTERY 38.5"
13	022097	2	WASHER, LOCK M6-1/4" (8KW)
	022097	1	WASHER, LOCK M6-1/4"
14	022127	1	NUT HEX 1/4-20 (8KW ONLY)
15	043116	2	SCREW HHC, M6-1.0 X 12 (8KW)
16	0E1330	1	GROMMET, Ø38.1 CROSS SLIT
17	0G7880	1	GASKET, ENGINE DIVIDER (8KW)
	0F8434	1	GASKET, ENGINE DIVIDER (10KW)
	0F8847	1	GASKET, ENGINE DIVIDER
18	0G7225	17	PANEL CLIP, M6-1.00
19	0G7622B	1	REGULATOR ASSEMBLY (8KW)
	0G7622A	1	REGULATOR ASSEMBLY (10KW)
	0G7581	1	PRESSURE STABILIZER REGULATOR ASSEMBLY
20	055414	1	LUG SLDLSS #2-#8 X 17/64 CU
21	0A1658	1	LOCK WASHER, SPECIAL 1/4
22	0G7225A	4	PANEL CLIP, 5/16-18
23	0G7339	4	BOLT, ENCLOSURE BASE TO MOUNTING PAD
24	0G7786A	4	BUSHING
25	0G6610	1	ENCLOSURE, BASE
26	0G7843	1	FOAM, FRONT EXHAUST SHIELD
	0G7849	1	FOAM, FRONT EXHAUST SHIELD (20KW)
27	0G6623	1	FRONT EXHAUST SHIELD
	0G7421	1	FRONT EXHAUST SHIELD (20KW)
28	0G7910	1	SCROLL, FAN (8KW, 10KW)
	0G7091	1	SCROLL, FAN
29	0G6618	1	PANEL, EXHAUST DIVIDER (8KW)
	0G6621	1	PANEL, EXHAUST DIVIDER (10KW)
	0G6616	1	PANEL, EXHAUST DIVIDER (14KW, 17KW)
	0G6809	1	PANEL, EXHAUST DIVIDER
30	0G7775	1	FOAM, EXHAUST END PANEL
31	0G7775A	2	FOAM, EXHAUST END PANEL SIDES
32	SEE SHEET 3		
33	0G7124A	1	HINGE ASSEMBLY - LEFT SIDE
34	0G7842	1	FOAM, BACK EXHAUST COMPARTMENT
35	0G6614	1	ENCLOSURE, BACK PANEL
36	051787	3	SCREW HHC M4-0.7 X 16
37	043180	6	WASHER FLAT M4
38	0G5900	1	COVER PLATE, RF MONITOR
39	0G5862	1	GASKET, RF COVER PLATE
40	0E6480	3	NUT HEX LOCK M4-0.7 NY INS
41	0E1330A	1	GROMMET, Ø38.1 CROSS SLIT WITH HOLE
42	0G7774A	2	1.00" THICK FOAM, ENCLOSURE ROOF

ITEM	PART #	QTY.	DESCRIPTION
43	SEE SHEET 3		
44	SEE SHEET 3		
45	0G7768	2	BUMPER
46	0G7124	1	HINGE ASSEMBLY - RIGHT SIDE
47	0D3700	11	NUT, LOCKING FLANGE M6-1.00
48	SEE SHEET 3		
49	SEE SHEET 3		
50	0G7650	1	BRACKET, CONTROL PNL FRONT (8KW,10KW)
	0G7651	1	BRACKET, CONTROL PNL FRONT
51	SEE SHEET 3		
52	0G6612B	1	ENCLOSURE END PANEL (8KW)
	0G6612	1	ENCLOSURE END PANEL
53	0G7258	2	SCREEN
54	0G7252	2	U-CLIP, M6-1.00
55	0G1705	2	SCREW HHFC M6-1.0 X 14
56	0G7829	1	FOAM, ENCLOSURE BACK PANEL
57	0E5968	11	GASKET, EXTRUDED TRIM
58	0G6812	1	COVER, FRONT TOP EXHAUST
59	0G7778	1	FOAM, FRONT TOP EXHAUST COVER
60	0G6811	1	COVER, BACK TOP EXHAUST
61	0G7776	1	FOAM, BACK TOP EXHAUST COVER
62	SEE SHEET 3		
63	SEE SHEET 3		
64	0G8166	12	WASHER, SELF LOCKING
65	0G7774	1	1.75" THICK FOAM, ENCLOSURE ROOF
66	0G8152	1	HARNESS GENERATOR TO EXTERNAL CONNECTION BOX (8KW)
	0G8153	1	HARNESS GENERATOR TO EXTERNAL CONNECTION BOX (10KW)
	0G8154	1	HARNESS GENERATOR TO EXTERNAL CONNECTION BOX
67	051713	2	WASHER FLAT M5
68	022152	5	WASHER LOCK #10
69	036937	2	SCREW PPHM#10-32 X 1
70	022158	5	NUT HEX #10-32
71	0C8911	1	POWER BLOCK
72	026850	1	WASHER SHAKEPROOF EXT 1/4 STEEL
73	049813	1	NUT HEX M6-1.0
74	0G0617	1	EXTERNAL CONNECTION BOX
75	0G8160	1	BADGE HOLDER
76	0G7253	1	LOUVER, SNAP IN
77	0G7653A	1	CONTROL PANEL FACIA (8KW)
	0G7653B	1	CONTROL PANEL FACIA (10KW)
	0G7653C	1	CONTROL PANEL FACIA
78	0742600179	1	WIRE ASSY, STARTER CONTROL TO STARTER MOTOR (8KW ONLY)
79	0G8131	1	PLUG 6.35 BLACK
80	0G8361A	1	GASKET, EXHAUST DIVIDER (8KW, 10KW)
	0G8361B	1	GASKET, EXHAUST DIVIDER (14KW, 17KW)
	0G8361C	1	GASKET, EXHAUST DIVIDER (20KW)
81	0G4933A	4	SCREW SWT 1/4-20 X 5/8
82	022447	1	1/4 SHAKEPROOF WASHER
83	SEE SHEET 3		
84	SEE SHEET 3		
85	047411	1	SCREW HHC, M6-1.0 X 16
86	SEE SHEET 3		
87	SEE SHEET 3		
88	0H5197	1	CROSS SUPPORT (8KW, 10KW)
	0H5198	1	CROSS SUPPORT (14KW, 17KW, 20KW)

**EXPLODED VIEW: ENCLOSURE  
DRAWING #: 0G7851**

**APPLICABLE TO: 2008 HSB**

UP TO SERIAL# 5027039

ITEM	PART #	QTY.	DESCRIPTION
2	0G6613	1	ENCLOSURE, FRONT PANEL
4	0G7486	1	STRIKER PLATE
8	090388	27	SCREW TAPTITE M6-1.0 X 12
23	0G7339	4	BOLT, ENCLOSURE BASE TO MOUNTING PAD
32	0G6612A	1	ENCLOSURE, EXHAUST SIDE PANEL
43	0G8223	1	ENCLOSURE ROOF ASSY, GALVANEAL TAN
	0G8682	1	ENCLOSURE ROOF ASSY, GALVANEAL GRAY
	0G8683	1	ENCLOSURE ROOF ASSY, ALUMINUM GRAY
44	0G7487	1	LATCH ASSEMBLY
48	0G6624	1	1/4 LATCH ASSEMBLY
49	0G6626	1	LATCH PAWL
51	075414	2	PIVET POP .1875 X .44
62	0G6619	1	MOUNTING PAD
63	0G7827	2	BALL PLUNGER

FROM SERIAL# 5027040 TO 5416585

ITEM	PART #	QTY.	DESCRIPTION
2	0G9377	1	ENCLOSURE, FRONT PANEL
4	REMOVED		
8	090388	24	SCREW TAPTITE M6-1.0 X 12
23	0G7339	4	BOLT, ENCLOSURE BASE TO MOUNTING PAD
32	0G6612C	1	ENCLOSURE, EXHAUST SIDE PANEL
43	0G9412	1	ENCLOSURE ROOF ASSY, GAVANEAL TAN
	0G9413	1	ENCLOSURE ROOF ASSY, GAVANEAL GRAY
	0G9414	1	ENCLOSURE ROOF ASSY, ALUMINUM GRAY
44	REMOVED		
48	0G6624	2	1/4 LATCH ASSEMBLY
49	0G6626	2	LATCH PAWL
51	0G9894	2	RIVET POP 5 X 8F NYLON
62	0G6619	1	MOUNTING PAD
63	REMOVED		
83	0G9386	2	THREADED SPACER M6-1.0
84	052857	2	NUT TOP LOCK FLANGE M6-1.0

FROM SERIAL# 5416586

ITEM	PART #	QTY.	DESCRIPTION
23	0H1958	4	BOLT, SHC 3/8-16 WITH LOCKING PATCH
62	0G6619A	1	MOUNTING PAD
86	022131	4	WASHER FLAT 3/8
87	022241	4	NUT, HEX 3/8-16