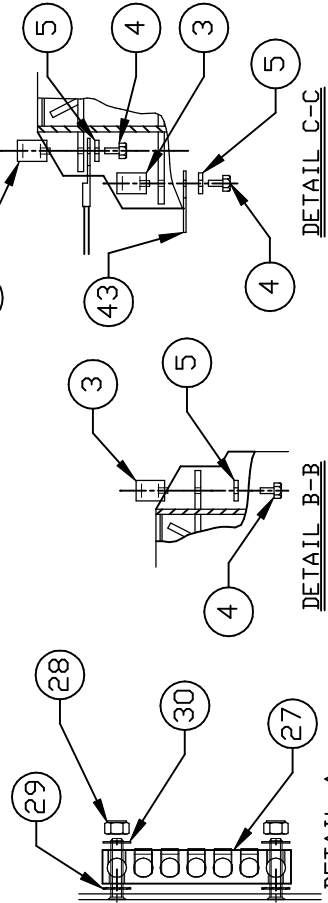
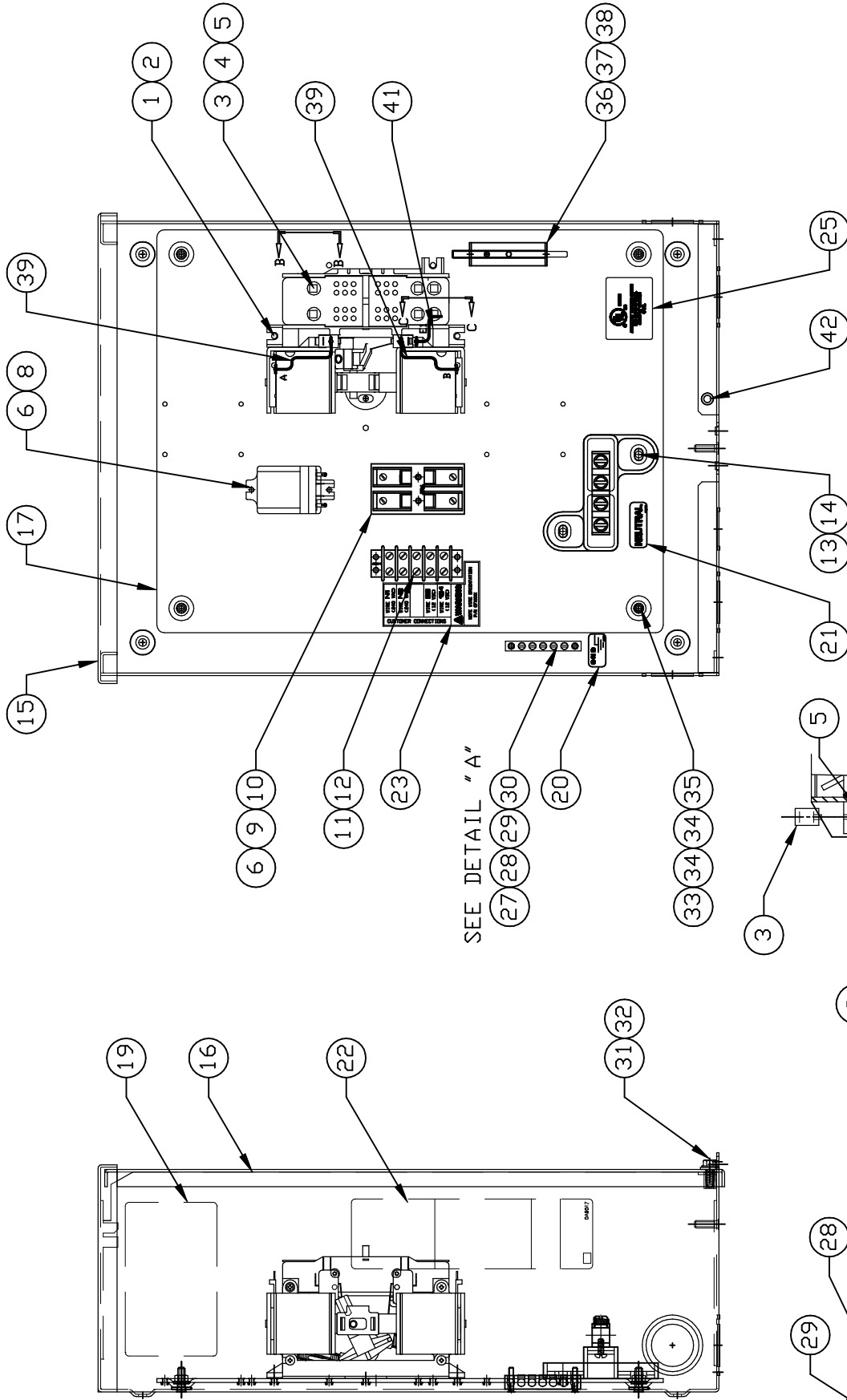


# GROUP C



DETAIL A  
(GROUND LUG ASSEMBLY)

DETAIL B-B  
(POWER TERMINAL LUG ASSEMBLY)  
NOTE: TORQUE ITEM #4 TO 24-30 IN. LBS.

DETAIL C-C

EXPLODED VIEW:  
100A 120/240V 2 POLE  
DRAWING #: 0G6023A

APPLICABLE TO:

ITEM	PART #	QTY.	DESCRIPTION
1	0C2237	1	TRSW-HSB 100A 2P 250V
2	074908	4	SCREW HHTT M5-0.8 X 10 BP
3	0G2000	6	LUG SLDLSS 1/0-#14X9/16 AL/CU
4	036933	6	SCREW, PPHMS 10-32 X 3/8"
5	022152	6	WASHER, LOCK # 10
6	0A1495	4	SCREW HHTT M4-0.7 X 10 BP
7	0G6025	1	WIRING HARNESS HSB (NOT SHOWN)
(5) 8	063617	1	RELAY PNL 12VDC DPDT
(5) 9	0D2806	1	FUSEBLOCK 30A 600V 2 POLE
10	073590A	2	FUSE 5A X BUSS HLD R73591
(5) 11	048850	1	BLOCK, TERM 20A 5 X 6
12	0A1661	2	RIVET, POP .156 X .67
13	0C4449	1	ASSY NEUTRAL BLOCK 100A
14	090388	2	SCREW HHTT M6-1.0 X 12 MM
15	0G51590AL08	1	ENCLOSURE, 100/200A TRANSFER SWITCH
16	0G51740AL08	1	COVER, TRANSFER SWITCH
17	0G55920AL08	1	SUBPLATE, 100/200A XFER SW
(4) 18	0F0668	1	DECAL, FRONT COVER ATS NEMA3R
19	0G5968A	REF.	DECAL, XFER SW NON 100A 120/240
20	067210A	1	DECAL, GROUNDING LUG
21	0A9457	1	DECAL, NEUTRAL
22	0A9517	1	DECAL, MANUAL 5A FUSE
23	0C2262	1	DECAL, TERMINAL STRIP
(1) 24	077036D	1	DECAL, TEST SEQUENCE
25	081221	1	DECAL, UL LIST HSB
(3) 26	0G3274	1	DECAL, LIVE CIRCUIT ENG/FRN/SPN
27	0E6523	1	GROUND BAR (5) 4-14 AWG CONN
28	0C6748	2	NUT HEX LOCK M4-0.7 SS NYL INS
29	026579	2	WASHER SHAKEPROOF EXT #8 STEEL
30	043180	2	WASHER FLAT M4
31	085296	1	SCREW HHC 1/4-20 X 1/2 SS
32	0F6165	1	WASHER M6 NYLON INT HEX
33	085889	4	NUT HEX 1/4-20 SS
34	022473	8	WASHER FLAT 1/4-M6 ZINC
35	022097	4	WASHER LOCK M6-1/4
36	0E6193	1	BRACKET, ARM EXTENDER
(2) 37	0E6155	1	ARM EXTENDER PIN
38	0D6162	2	RIVET POP .156 X .362 AL
39	0E6303	2	WIRE-A
41	0E6303C	1	WIRE-E1
42	058000E	1	NUT TRIC 1/4-20 X .525

(1) CENTER DECAL ON INSIDE OF THE COVER (ITEM #16)

(2) SUPPLIED WITH TRANSFER SWITCH ITEM #1

(3) PLACE DECAL ON OUTSIDE OF COVER, LOWER RIGHT CORNER.

(4) NOT SHOWN ON THIS ASSEMBLY, CENTER DECAL ON FRONT OF COVER, 7" FROM TOP OF ENCLOSURE.

(5) SUPPLIED WITH HARNESS (P/N 0G6025)