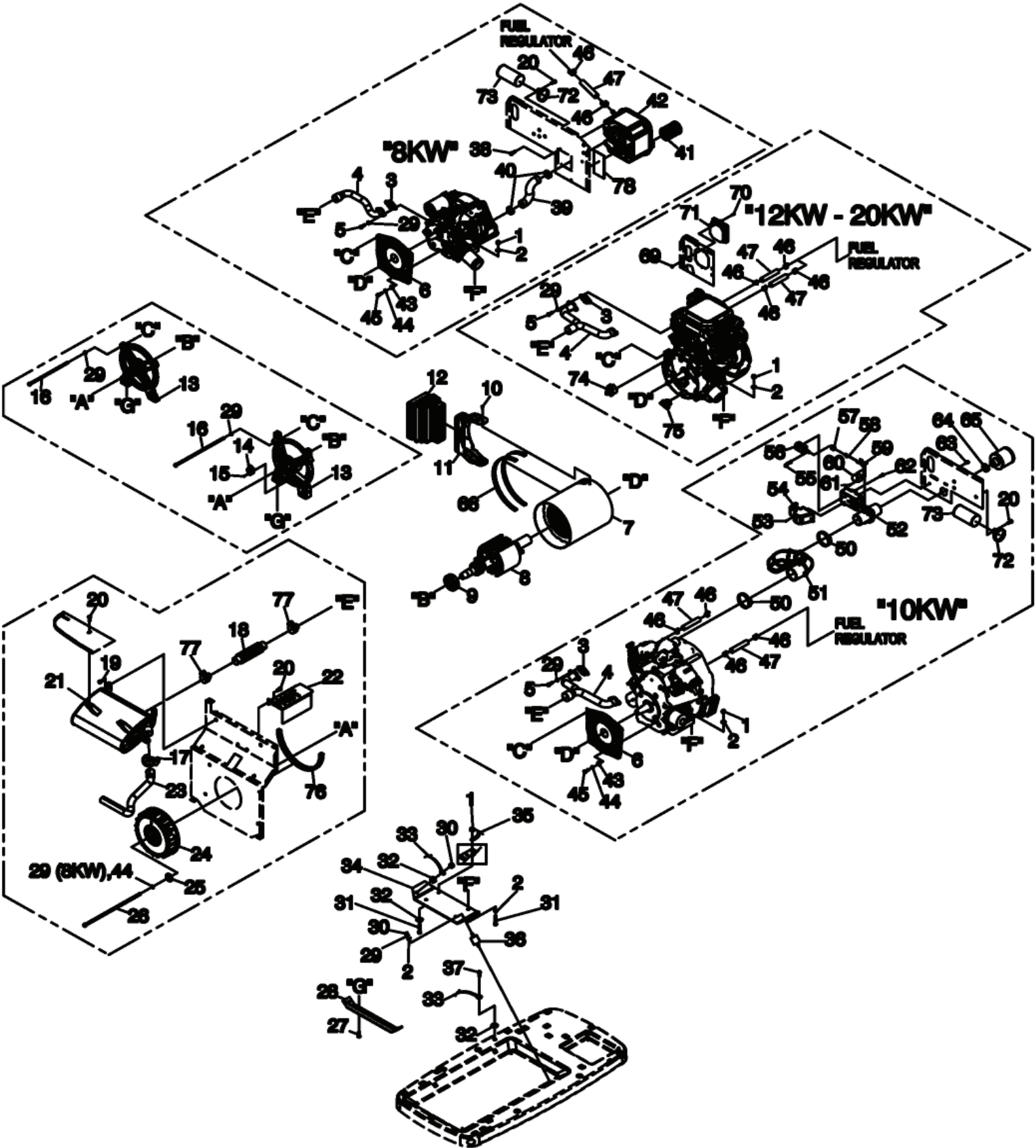


# GROUP EV



**EXPLODED VIEW: POWER HEAD  
DRAWING #: 0G7746**

**GROUP EV**

**APPLICABLE TO: 2008 HSB**

ITEM	PART#	QTY.	DESCRIPTION
1	049820	4	NUT LOCK HEX M8-1.25 NYLON INSERT
2	022145	9	WASHER FLAT M8-5/16
3	090239	1	GASKET, EXHAUST (8KW)
	0E9369	2	GASKET, EXHAUST (10KW)
	0C4138	2	GASKET, EXHAUST
4	0G7236	1	MANIFOLD, EXHAUST (8KW)
	0F8115	1	MANIFOLD, EXHAUST (10KW)
	0F7799	1	MANIFOLD, EXHAUST
5	040976	2	SCREW SHC M8-1.25 X 20 (8KW)
	040976	4	SCREW SHC M8-1.25 X 20
6	0G7080	1	ENGINE ADAPTOR CASTING (8KW & 10KW)
7	0G7030C	1	STATOR (8KW)
	0G7031C	1	STATOR (10KW)
	0G7324C	1	STATOR (12KW & 14KW)
	0G7325C	1	STATOR (16KW & 17KW)
	0G7326C	1	STATOR (20KW)
8	0G7035C	1	ROTOR (8KW)
	0G7036C	1	ROTOR (10KW)
	0G7321C	1	ROTOR (12KW & 14KW)
	0G7322C	1	ROTOR (16KW & 17KW)
	0G7323C	1	ROTOR (20KW)
9	056482	1	BEARING
10	045756	2	SCREW HHTT M6-1.0 X 10
11	0G7255	1	ALTERNATOR AIR IN DUCT (8KW & 10KW)
	0G7256	1	ALTERNATOR AIR IN DUCT
12	0G7257	1	ALTERNATOR AIR IN BELLOWS
13	0G7081	1	BEARING CARRIER (8KW & 10KW)
	0F7774	1	BEARING CARRIER
14	066386	1	ASSEMBLY BRUSH HOLDER
15	066849	2	SCREW HHTT M5-0.8 X 16 (12KW - 20KW)
16	0G7360	4	BOLT, IHCS M8-1.25 X 300 (8KW & 10KW)
	0D1846	4	BOLT, IHCS M8-1.25 X 345 (12KW - 17KW)
	0D3549	4	BOLT, IHCS M8-1.25 X 400
17	0D5823	1	U-BOLT 5/16" X 1.62" WITH SADDLE
18	0G7283	1	FLEX PIPE (8KW & 10KW)
	0F6528	1	FLEX PIPE (12KW - 17KW)
19	0C5453	4	SCREW HHTT M8-1.2 X 12
20	090388	4	SCREW TAPTITE M6-1.0 X 12
	090388	5	SCREW TAPTITE M6-1.0 X 12 (8KW & 10KW)
21	0G7336	1	MUFFLER
22	0G7566	1	FLEX COVER (8KW & 10KW)
	0G7586	1	FLEX COVER
23	0G7454	1	TAIL PIPE
24	0C8096	1	FAN, CURVED BLADE (8KW)
	0F8998	1	FAN CURVED BLADE (10KW)
	0E9579	1	FAN CURVED BLADE
25	049451	1	WASHER FLAT .406 ID X 1.62 OD
26	029092	1	BOLT IHHC 5/16-24 X 11.25" (8KW)
	0G7365	1	BOLT IHHC 3/8-24 X 12.50" (10KW)
	0D1838	1	BOLT IHHC 3/8-24 X 15.50" (12KW - 17KW)
	0G7408	1	BOLT IHHC 3/8-24 X 17.50"
27	059637	2	SCREW TAPTITE 3/8-16 X 3/4"
28	0G6629A	1	BRACKET, ALTERNATOR MOUNTING (8KW & 10KW)
	0G6629B	1	BRACKET, ALTERNATOR MOUNTING (12KW - 17KW)
	0G6629C	1	BRACKET, ALTERNATOR MOUNTING
29	022129	10	WASHER LOCK M8-5/16 (8KW)
	022129	11	WASHER LOCK M8-5/16
30	022259	4	NUT LOCK HEX 5/16-18

ITEM	PART#	QTY.	DESCRIPTION
31	039287	4	SCREW HHC M8-1.25 X 45 (8KW)
	051731	4	SCREW HHC M8-1.25 X 50
32	0C3168	3	5/16 SPECIAL LOCK WASHER
33	0C2417A	1	EARTH STRAP 3/8 X 3/8
34	0G7237A	1	BRACKET ENGINE MOUNTING (8KW)
	0G7237B	1	BRACKET ENGINE MOUNTING (10KW)
	0G7237C	1	BRACKET ENGINE MOUNTING
35	0388050ADO	1	CABLE, #6 30" BLACK BATTERY
36	0C7758	4	RUBBER MOUNT
37	083512	1	SCREW HHTT M8-1.25 X 16
38	0C9764	3	SCREW PLASTITE 1/4-15 X 3/4" (8KW ONLY)
39	0G6625	1	AIR IN SNORKEL (8KW ONLY)
40	048031K	2	BAND HOSE CLAMP $\phi$ 35.05 (8KW ONLY)
41	0G3332	1	AIR FILTER (8KW ONLY)
42	0H0884	1	AIR BOX (8KW ONLY)
43	022131	4	WASHER FLAT 3/8 (8KW & 10KW)
44	022237	4	WASHER LOCK 3/8 (8KW)
	022237	5	WASHER LOCK 3/8 (10KW)
	022237	1	WASHER LOCK 3/8
45	022511	4	BOLT HHC 3/8-16 X 1.25" (8KW & 10KW)
46	048031M	2	HOSE CLAMP 3/4" ID (8KW)
	048031M	4	HOSE CLAMP 3/4" ID
47	0F7065	1.5FT	HOSE RES 1/2 LP GAS (8KW)
	0F7065	3FT	HOSE RES 1/2 LP GAS
48	0C7649	1	CLAMP HOSE .38-.87
50	099502	2	CLAMP HOSE #24 B1.06-2.00 (10KW ONLY)
51	0E9549	1	HOSE, INTAKE (10KW ONLY)
52	0E9589	1	CHOKE HOUSING (10KW ONLY)
53	0E9595	2	SCREW PPH HI-LO #6 1/2 W/ #5HD (10KW ONLY)
54	077075	1	BOOT, CHOKE SOLENOID (10KW ONLY)
55	077091	1	COTTER PIN (10KW ONLY)
56	0F9273	1	SOLENOID, 6 VOLTS DC (10KW ONLY)
57	0E9591	1	SPRING-CHOKE RETURN (10KW ONLY)
58	0E9588	1	LINKAGE, CHOKE (10KW ONLY)
59	0E9590	1	ASSEMBLY, CHOKE SHAFT (10KW ONLY)
60	0E9542	1	VALVE, CHOKE (10KW ONLY)
61	0D1683	2	SCREW PPHM M3-0.5 X (10KW ONLY)
62	0E9592	2	SCREW PPHM #4-40 X 3/8 SEMS (10KW ONLY)
63	0E9594	3	SCREW PPH HI-LO #14-15 X 1/2 (10KW ONLY)
64	035685	1	CLAMP HOSE #28 1.32-2.25
65	0E9581	1	AIR CLEANER (10KW ONLY)
66	029451	2.6 FT	TAPE ELEC UL FOAM 1/8 X 1/2
67	0F7065	1.25 FT	HOSE LP 1/2" LP (8KW ONLY)
68	048031M	2	HOSE CLAMP 3/4"
69	082025	2	NUT HEX LOCK M5-0.8 NYINS (12KW - 20KW)
70	075235	2	SCREW HHC M5-0.8 X 30 (12KW - 20KW)
71	0F9719	1	HOUSING REGULATOR (12KW - 20KW)
72	0G7909	1	CLAMP STL/VNL 2.5 X .281 (8KW & 10KW)
73	0G5958A	1	CAPACITOR 59UF (8KW)
	0G5958B	1	CAPACITOR 78UF (10KW)
74	0G2387	1	PLUG, GEAR COVER (12KW - 20KW)
75	0G4750	1	PLUG, GEAR COVER ADAPTOR-SMALL (12KW - 20KW)
76	0G7857	1	FOAM, EXHAUST DIVIDER (12KW-17KW)
77	0H1665	2	BAND CLAMP DIA 36-39MM
78	0H0883	1	GASKET, AIR CLEANER (8KW ONLY)