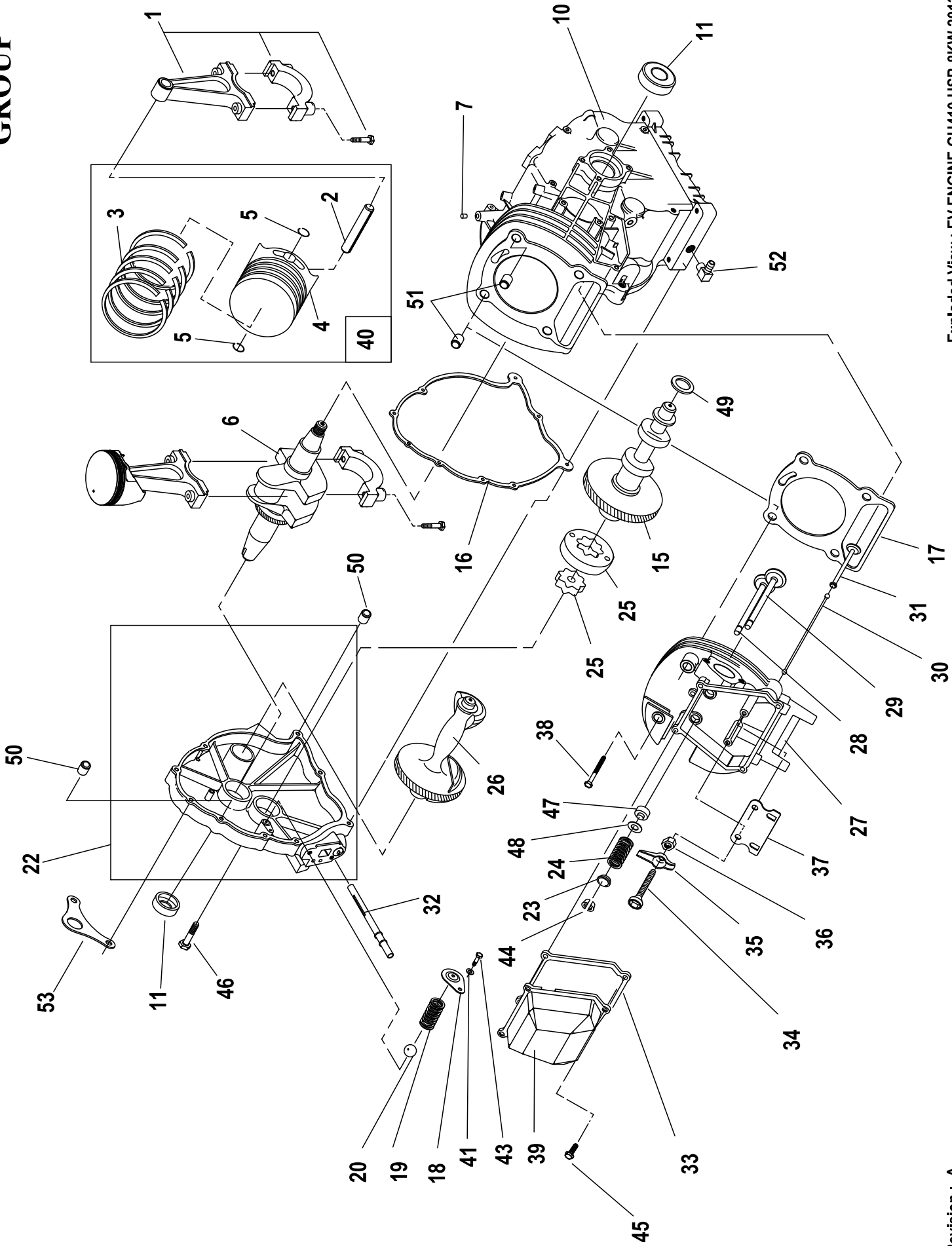


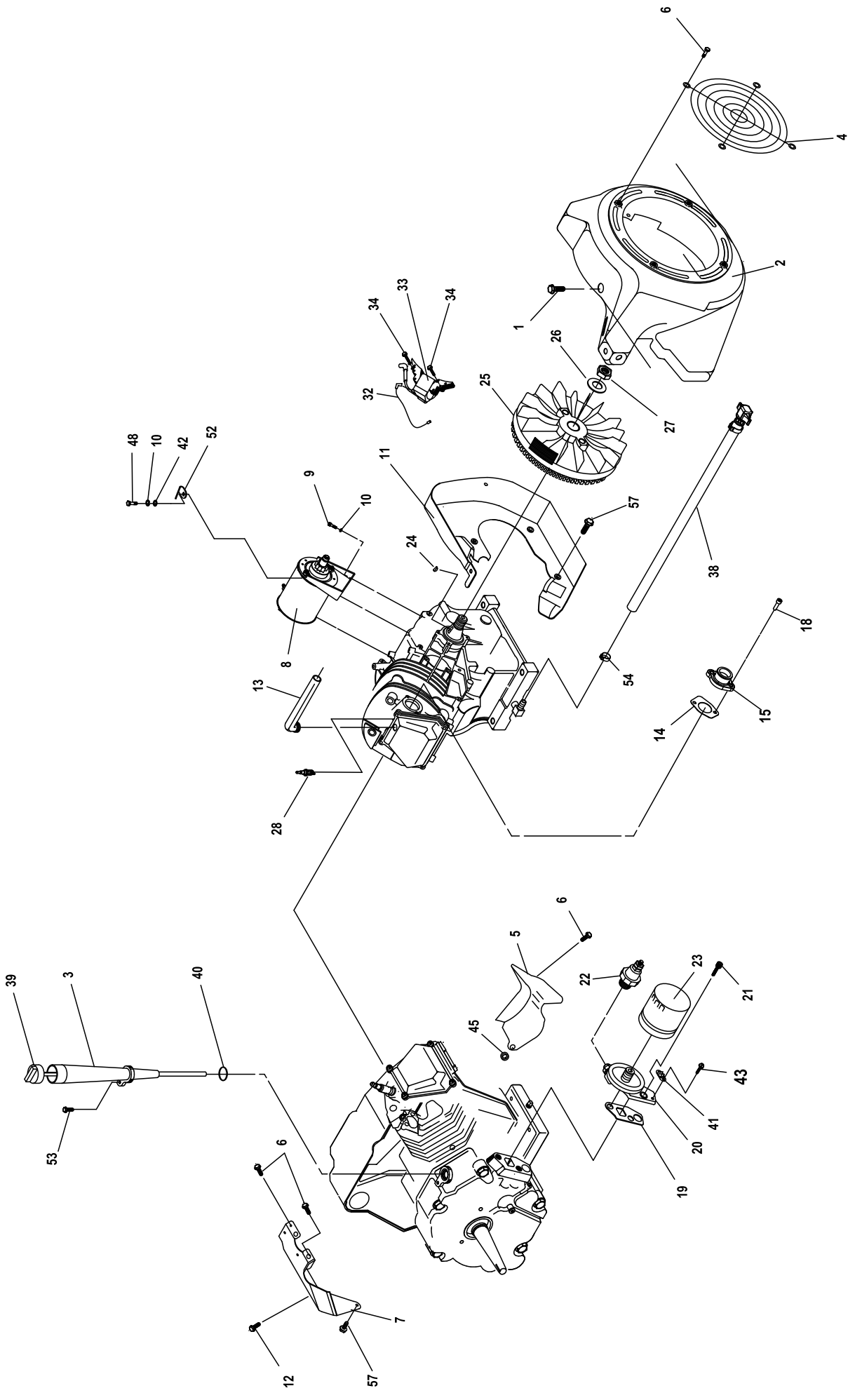
# GROUP



**EXPLODED VIEW: EV ENGINE GH410 HSB-8KW 2013****DRAWING #: 0J9880****GROUP D**

<b>ITEM</b>	<b>PART#</b>	<b>QTY.</b>	<b>DESCRIPTION</b>
1	0E3221	1	ASSYMBLY, CONNECTING ROD
2	0G7940	1	WRIST PIN
3	0G2565	1	RING SET, PISTON 90
4	0K0988	1	PISTON FLAT TOP 90 HSB
5	071983	2	RETAINER PISTON PIN
6	0E8440	1	ASSEMBLY CRANKSHAFT
7	0H8488	1	EXPANSION PLUG 0.25"
10	0H0165C	1	CRANKCASE MACHINED GH410
11	0E3812	2	SEAL 25 I.D. CRANKSHAFT
15	0K0793	1	ASSEMBLY CAMSHAFT
16	076701	1	GASKET CRANKCASE
17	021713B	1	GASKET HEAD 410
18	078691	1	COVER OIL PRESSURE RELIEF
19	0A5771	1	SPRING OIL RELIEF 360
20	0A5776	1	BALL DIA 11/32 PRESSURE LF
22	0G4233C	1	ASSY GEAR COVER GH410 TOP CHECK ONLY
23	0D2274	2	RETAINER, VALVE SPRING
24	0K0733	2	SPRING VALVE
25	086025	1	SET GEROTOR 12 THICK
26	0E3341	1	BALANCER MACHINED
27	0K0680	1	ASSEMBLY CYLINDER HEAD
28	086516	1	VALVE, EXHAUST
29	086517	1	VALVE INTAKE
30	0D9853B	2	PUSH ROD
31	083897	2	TAPPET
32	077158	1	ASSEMBLY OIL PICK-UP SCREEN
33	0C3150	1	GASKET ROCKER COVER 410
34	072694	2	STUD D20 PIVOT BALL
35	083907	2	ARM SOLID ROCKER
36	0D3998	2	NUT HEX M8-1.0
37	078694	1	PLATE PUSH ROD GUIDE
38	021742	4	SCREW, HHFL M10-1.5 X 105
39	0D6094	1	ASSEMBLY ROCKER COVER BREATHER
40	0K1633	1	ASSY PISTON FLAT TOP GT999 (I/N'S:2-5)
41	0G5792	1	WASHER LOCK M5 RIBBED
43	045770	1	SCREW HHC M5-0.8 X 10 G8.8
44	086515	4	KEEPER VALVE SPRING
45	0G0919	4	SCREW HHFCS M6-1 X 12 G8.8
46	0A1442	8	SCREW, HHFC M8-1.25 X 42
47	078672	1	SEAL VALVE STEM D7
48	089673	2	WASHER, VALVE SPRING
49	0B2104	1	WASHER LARGE SPRING
50	078699B	2	SLEEVE DOWEL PIN 12mm DIA
51	078699C	2	SLEEVE DOWEL PIN 14mm DIA
52	043790A	1	BARBED EL 90 3/8NPT X 3/8 VS
53	0K5148	1	LIFT HOOK 410 GEAR COVER

# GROUP



**EXPLODED VIEW: EV ENGINE GH410 HSB-8KW 2013****DRAWING #: 0J9880****GROUP D**

<b>ITEM</b>	<b>PART#</b>	<b>QTY.</b>	<b>DESCRIPTION</b>
1	0C1069	7	SCREW TAPTITE M6-1.0 X 8
2	0D22420ST03	1	HOUSING BLOWER GH410 BLACK
3	0G1220	1	TUBE GH410 OIL FILL / CHECK
4	0C9997	1	GUARD, FAN
5	088434	1	WRAPPER, BOTTOM
6	045756	6	SCREW, TAPTITE M6-1 X 10
7	0C4176A	1	WRAPPER, TOP
8	0D9004A	1	ASSY, STARTER
9	081990	2	SCREW SHC M8-1.25 X 40
10	022129	2	WASHER LOCK M8 -5/16
11	0C2458A	1	BACKPLATE L/F D/F
12	0G7967	1	SCREW, HHTT 5/16"-18 X 1/2" SEMI-GIMLET
13	0J8282	1	BREATHER HOSE
14	091039	1	GASKET, INTAKE ADAPTOR
15	0K2400	1	ADAPTOR INTAKE PLASTIC
18	0H8227	2	FLANGE HEAD SCREW M6-1.0 X 20
19	086999	1	GASKET OIL FILTER ADAPTOR
20	0D5667A	1	ADAPTOR OIL FILTER
21	049821	2	SCREW SHC M8-1.25 X 30
22	0H1315	1	SWITCH OIL 5 PSI
23	070185E	1	OIL FILTER
24	082774	1	KEY WOODRUFF 4 X 19D
25	091222C	1	FLYWHEEL WITH RING GEAR 27°
26	067198N	1	WASHER BELV-20 X2.2
27	067890	1	NUT HEX FLYWHEEL
28	0G0767B	1	SPARKPLUG
32	0K3166	1	ASSEMBLY WIRE
33	0G9241T	1	ASSEMBLY IGNITION COIL ADVANCE W/DIODE
34	080318	2	SCREW HHFC M6-1.0 X 25
38	0H8131	1	ASSEMBLY OIL DRAIN HOSE
39	0H5600	1	DIPSTICK GH410
40	090072	1	O-RING 9/16 X 3/4 X 3/32
41	094090	1	SWITCH THERMAL 293F
43	0F2094	2	SCREW PPHM M3-0.5 X 6 SEMS
45	022717B	1	GROMMET
53	0D6147	1	SCREW, HHFCS M6-1.0 X 10
54	0G3662B	1	CLAMP HOSE OETIKER STEPLESS 17
57	0E1552	5	SCREW HHFC M6-1.0 X 12