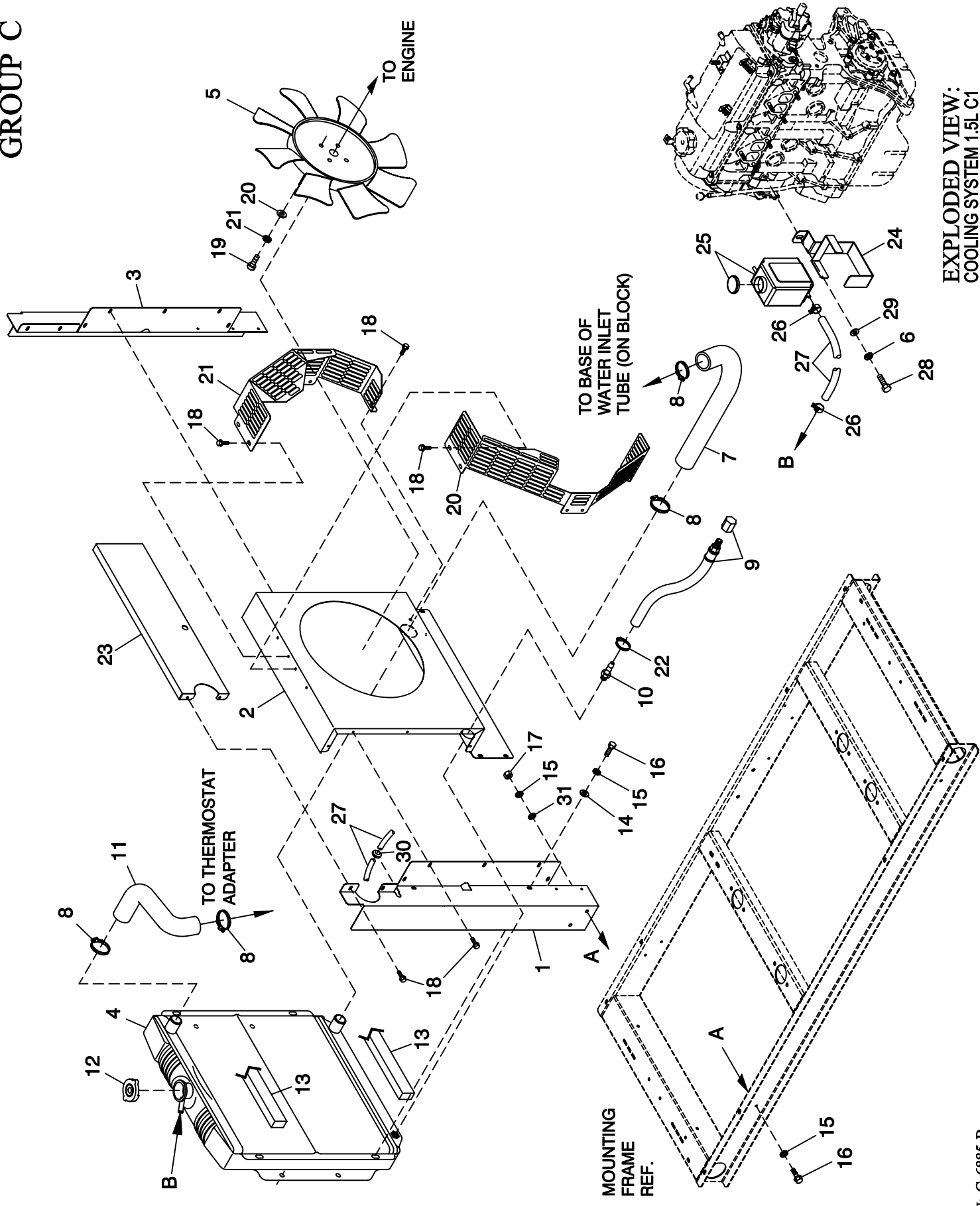


# GROUP C



EXPLODED VIEW:  
 COOLING SYSTEM 1.5L C1  
 DRAWING #: 0F7466

## EXPLODED VIEW: COOLING SYSTEM 1.5L C1

DRAWING #: 0F7466

GROUP C

APPLICABLE TO:

ITEM	PART #	QTY.	DESCRIPTION
1	0F7211	1	SUPPORT RADIATOR LH SIDE
2	0F7209	1	VENTURI 15" DIA FAN
3	0F7210	1	SUPPORT RADIATOR RH SIDE
4	0E9837A	1	RADIATOR 2.5L CPL
5	0E1936	1	FAN COOLING 15"
6	022129	1	WASHER LOCK M8-5/16
7	0F7166	1	RADIATOR HOSE LWR 1.5L C1 CPL
8	099502	4	CLAMP HOSE #24 B1.06-2.00
9	069860C	1	HOSE OIL DRAIN ASSY 21"
10	035461	1	BARBED STR 1/4 NPT X 3/8
11	0A6258	1	HOSE - UPPER RADIATOR
12	046627	1	CAP RADIATOR
13	052250	2	TAPE FOAM 1 X 1 (17" LG)
14	022473	4	WASHER FLAT 1/4-M6 ZINC
15	022097	8	WASHER LOCK M6-1/4
16	0C8566	8	SCREW HHFC M6-1.0 X 20 G8.8
17	049813	4	NUT HEX M6 X 1.0 G8 YEL CHR
18	0C2454	24	SCREW THF M6-1 X 16 N WA Z/J5
19	055816	4	SCREW HHC M6-1.0 X 70 G8.8
20	0F7594	4	GUARD FAN LH C1 CPL
21	0F7595	4	GUARD FAN RH C1 CPL
22	0C7649	1	CLAMP HOSE .38-.87
23	0F7320	1	BLOCK OFF UPPER
24	0F1433	1	BRACKET 2.5L FORD WATER BOTTLE
25	076749	1	TANK COOLANT RECOVERY
26	048031C	2	CLAMP HOSE BAND 1/4
27	029032	1	HOSE 9/32 ID (40" LG)
28	040976	1	SCREW SHC M8-1.25 X 20 G12.9
29	022145	1	WASHER FLAT 5/16-M8 ZINC
30	029107	1	GROMMET 7/8 X 3/16 X 5/8
31	026850	4	WASHER SHAKEPROOF EXT 1/4 STL