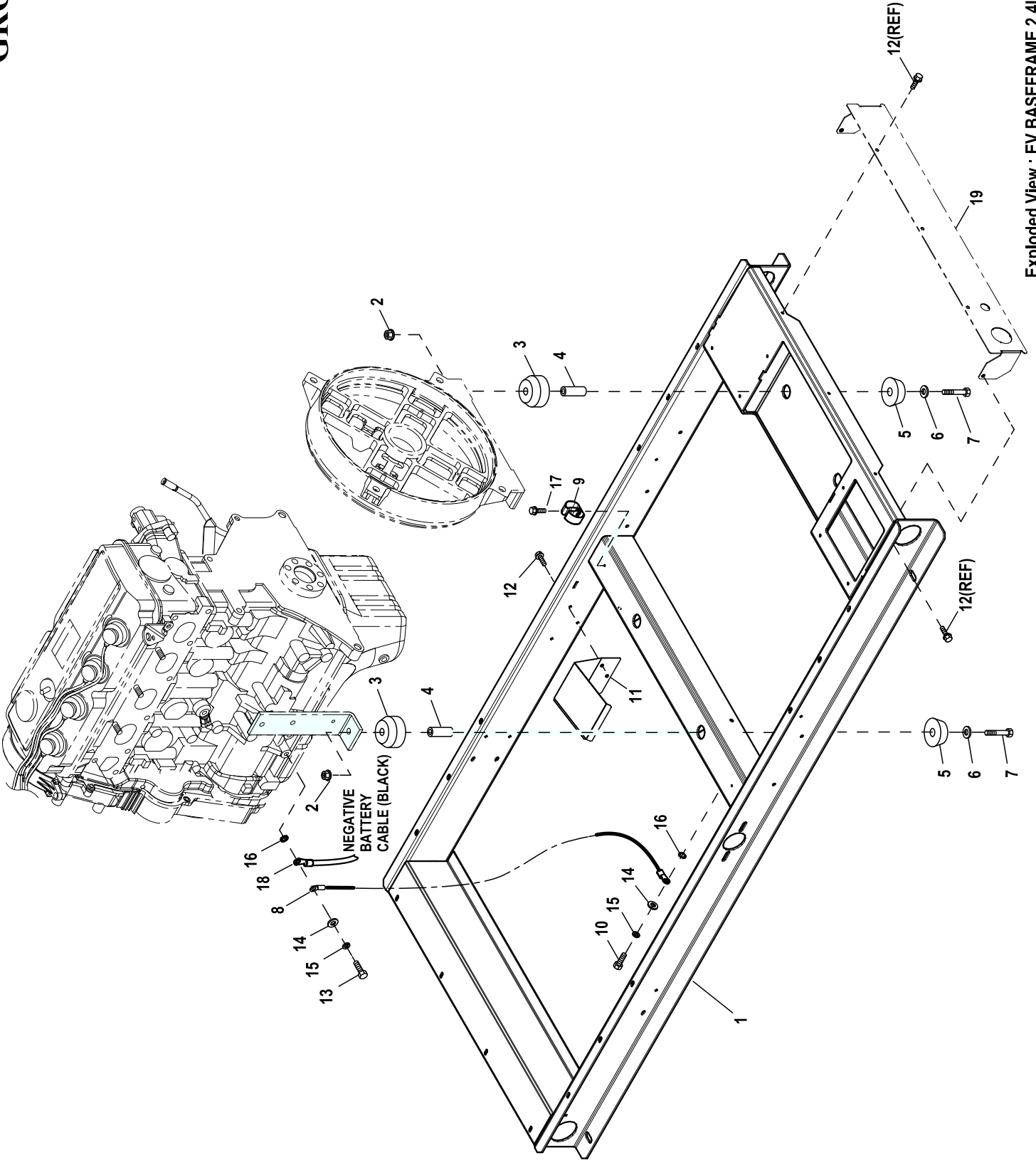


GROUP C



EXPLODED VIEW: EV BASEFRAME 2.4L G2 C2**DRAWING #: 0K9965****GROUP C**

ITEM	PART#	QTY.	DESCRIPTION
(1)1	0K99670ST0R	1	WELDMENT BASE G2.4L C2
2	052860	4	NUT FLANGED HEX M12-1.75
3	052251	4	DAMPENER VIBRATION 40 BLUE
4	052257	4	SPACER .49 X .62 X 1.87 PWDR/ZNC
5	052252	4	DAMPENER VIBRATION
6	052259	4	WASHER FLAT M12
7	052891	4	SCREW HHC M12-1.75 X 80 G8.8
8	0536210999	1	ASSY WIRE GND #4 X 14" 3/8 LUG
9	065852	1	SPRING CLIP HOLDER .37-.62
10	049814	1	SCREW HHC M10-1.5 X 25 C8.8
11	0H5718	1	HEAT SHIELD 2.4L G2
12	0C2454	3	SCREW HWHT M6-1 X 16 N WA Z/JS
13	052212	1	SCREW HHC M10-1.25 X 25 C8.8
14	022131	2	WASHER FLAT 3/8-M10 ZINC
15	046526	2	WASHER LOCK M10
16	025507	2	WASHER LOCK EXT 7/16 STL
17	045764	1	SCREW HHTT M4-0.7 X 8 BP
18	038805Y	REF	CABLE BATT BLK #1 X 16.00 NEG
(1)19	0K99720ST0R	REF	PLATE COVER BASE C2

NOTES (UNLESS OTHERWISE SPECIFIED):

(1) SHEET METAL PARTS LISTED IN THE BOM TABLE ARE REPRESENTING GENERIC PARTS (NO COLOR)

- MANUFACTURING: FOR CORRECT MATERIAL AND COLOR REFER TO XA BOM.
- CUSTOMER: WHEN ORDERING REPLACEMENT PARTS ENTER BASE NUMBER (FIRST 6 DIGITS ONLY) IN THE SYSTEM FOR CORRECT MATERIAL AND COLOR (FOR REFERENCE SEE GUIDELINE 0H7169).