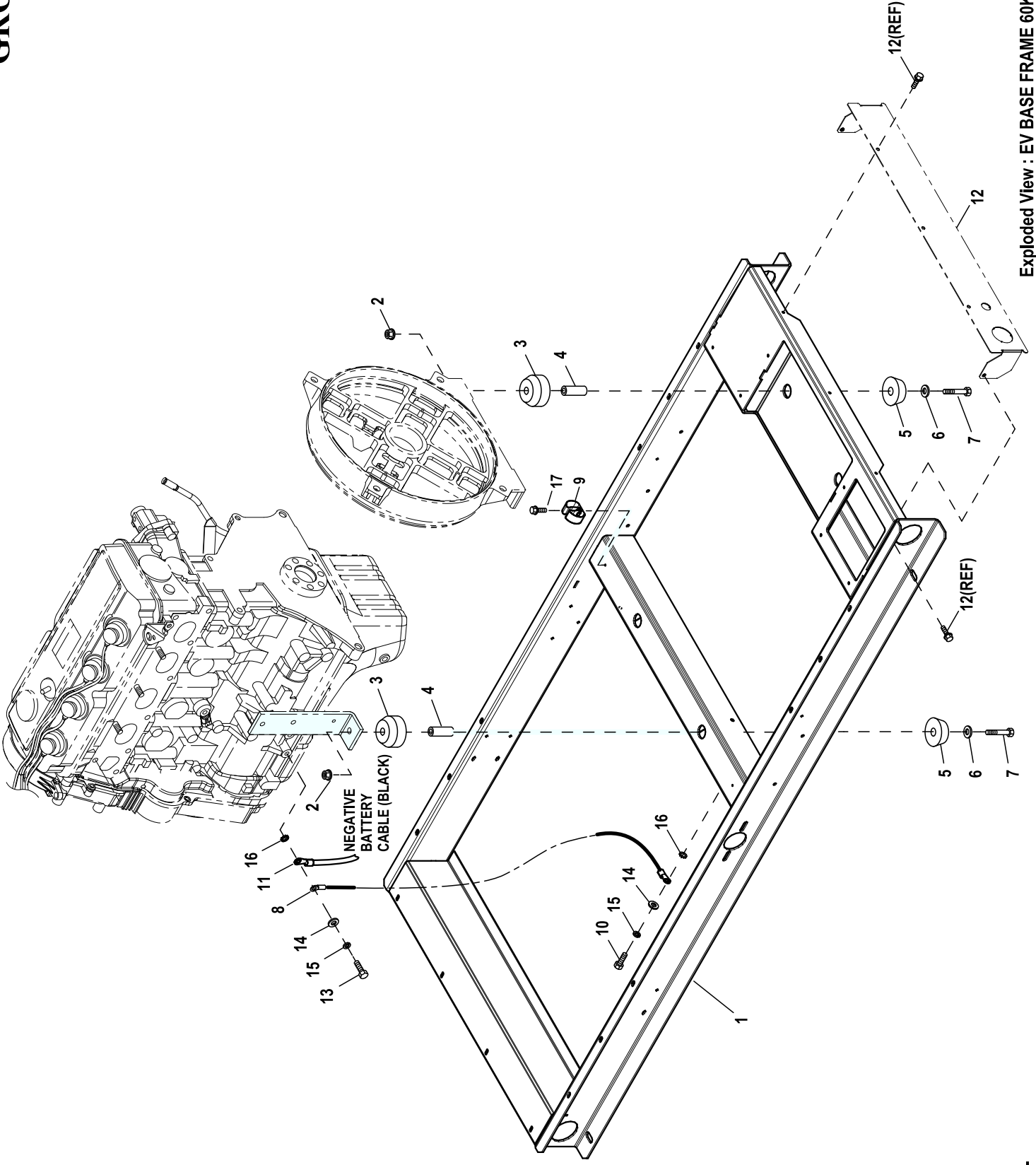


# GROUP C



Exploded View : EV BASE FRAME 60KW G2.4L C2  
Drawing No. : 10000001022

**EXPLODED VIEW: EV BASE FRAME 60KW G2.4L C2****DRAWING #: 10000001022****GROUP C**

<b>ITEM</b>	<b>PART#</b>	<b>QTY.</b>	<b>DESCRIPTION</b>
(1)1	0K99670ST0R	1	WELDMENT BASE G2.4L C2
2	G052860	4	NUT FLANGED HEX M12-1.75
3	G052251	4	DAMPENER VIBRATION 40 BLUE
4	G052257	4	SPACER .49 X .62 X 1.87 PWDR/ZNC
5	G052252	4	DAMPENER VIBRATION
6	G052259	4	WASHER FLAT M12
7	G052891	4	SCREW HHC M12-1.75 X 80 G8.8
8	G0536210999	1	ASSY WIRE GND #4 X 14" 3/8 LUG
9	G065852	1	SPRING CLIP HOLDER .37-.62
10	G049814	1	SCREW HHC M10-1.5 X 25 C8.8
11	038805Y	REF	CABLE BATT BLK #1 X 16.00 NEG
(1)12	0K99720ST0R	REF	PLATE COVER BASE C2
13	G052212	1	SCREW HHC M10-1.25 X 25 C8.8
14	G022131	2	WASHER FLAT 3/8-M10 ZINC
15	G046526	2	WASHER LOCK M10
16	G025507	2	WASHER LOCK EXT 7/16 STL
17	G045764	1	SCREW HHTT M4-0.7 X 8 BP

## NOTES (UNLESS OTHERWISE SPECIFIED):

(1) SHEET METAL PARTS LISTED IN THE BOM TABLE ARE REPRESENTING GENERIC PARTS (NO COLOR)

- MANUFACTURING: FOR CORRECT MATERIAL AND COLOR REFER TO XA BOM.
- CUSTOMER: WHEN ORDERING REPLACEMENT PARTS ENTER BASE NUMBER (FIRST 6 DIGITS ONLY) IN THE SYSTEM FOR CORRECT MATERIAL AND COLOR (FOR REFERENCE SEE GUIDELINE 0H7169).