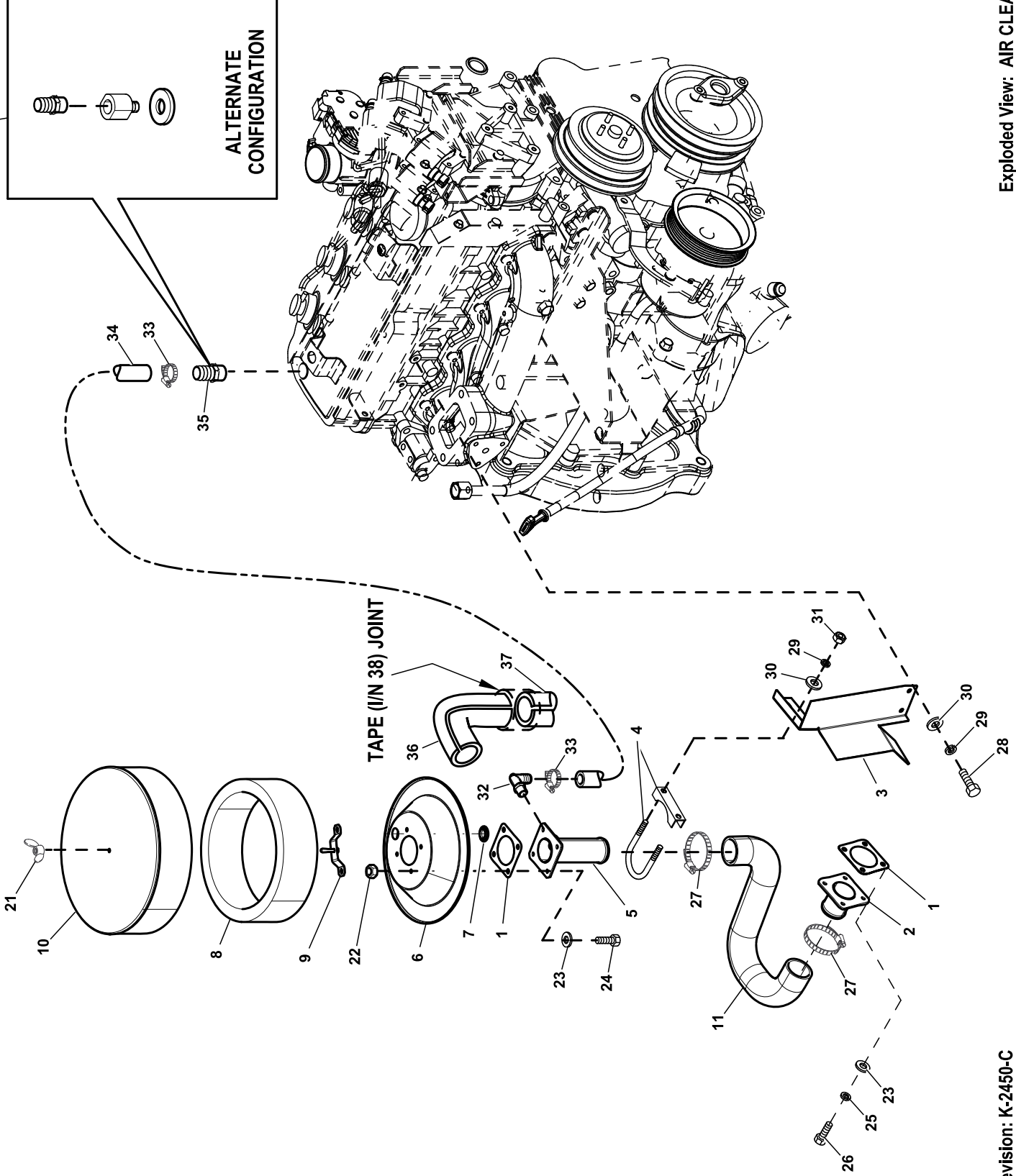


GROUP D

35 SEE NOTE (4)



EXPLODED VIEW: EV AIR CLEANER 2.4L G2 TURBO**DRAWING #: 0H1954****GROUP D**

| ITEM | PART# | QTY. | DESCRIPTION |
|-------------|---------------|-------------|--------------------------------|
| 1 | 0F4269 | 2 | GASKET MIXER BODY |
| 2 | 0H0030 | 1 | ADAPTOR-MIXER |
| 3 | 0G39340ST03 | 1 | BRACKET AIR INTAKE |
| 4 | 035480 | 1 | BOLT U 5/16-18 X 2.06 |
| 5 | 0H0028 | 1 | ADAPTOR-AIR CLEANER |
| 6 | 0F4271 | 1 | BASE PLATE, AIR CLEANER |
| 7 | 0H0219 | 1 | PLUG PLASTIC 2.5" BLACK |
| 8 | 0F5418 | 1 | ELEMENT AIR FILTER |
| 9 | 0F4270 | 1 | HOLD DOWN AIR CLEANER PLATED |
| 10 | 0F6323 | 1 | PLATE, AIR CLEANER TOP |
| 11 | 0H0035 | 1 | HOSE AIR INTAKE |
| 12 | 0G0153 | 1 | BARBED EL 90 1/2NPT X 3/4 HOSE |
| 13 | 0D3700 | 4 | NUT FLANGE M6-1.0 NYLOK |
| 14 | 049811 | 8 | WASHER, FLAT, M6 |
| 15 | 045757 | 4 | SCREW HHC M6-1.0 X 25 G8.8 |
| 16 | 022097 | 4 | WASHER LOCK M6-1/4 |
| 17 | 047411 | 4 | SCREW HHC M6-1.0 X 16 C8.8 |
| 18 | 022145 | 2 | WASHER FLAT 5/16-M8 ZINC |
| 19 | 022129 | 2 | WASHER LOCK M8-5/16 |
| 20 | 039253 | 2 | SCREW HHC M8-1.25 X 20 G8.8 |
| 21 | 037561 | 1 | NUT WING 1/4-20 W/NY INS ST ZN |
| 22 | 0D3700 | 4 | NUT FLANGE M6-1.0 NYLOK |
| 23 | 049811 | 8 | WASHER, FLAT, M6 |
| 24 | 045757 | 4 | SCREW HHC M6-1.0 X 25 G8.8 |
| 25 | 022097 | 4 | WASHER LOCK M6-1/4 |
| 26 | 047411 | 4 | SCREW HHC M6-1.0 X 16 C8.8 |
| 27 | 086133C | 2 | CLAMP HI TORQUE 1.75 - 2.625 |
| 28 | 039253 | 2 | SCREW HHC M8-1.25 X 20 G8.8 |
| 29 | 022129 | 4 | WASHER LOCK M8-5/16 |
| 30 | 022145 | 4 | WASHER FLAT 5/16-M8 ZINC |
| 31 | 022259 | 2 | NUT HEX 5/16-18 STEEL |
| 32 | 0H1712 | 1 | BARBED EL-90 POLY 1/2NPT X 3/4 |
| 33 | 057822 | 2 | CLAMP HOSE #8 .53-1.00 |
| 34 | 059057 | 1 | HOSE 3/4 ID SAE-30R2 (6"LG) |
| 35 | 0H0027 | 1 | FITTING VENT VALVE COVER 2.4L |
| | 047527(3)(4) | 1 | BARBED STR 1/2NPT X 3/4 |
| | 0H1644(4) | 1 | FTG VNT VALVE COVER |
| | 0G10080103(4) | 1(REF) | GASKET, PCV VALVE |
| 36(1)(2) | 0H1787A | 1 | PIPE INSULATION ELBO |
| 37(2) | 0H1787 | 1 | PIPE INSULATION (4.5"LG) |
| 38(2) | 0H1801 | 1 | PIPE INSULATION TAPE (7"LG) |

(1)TRIM PIPE INSULATION ELBOW TO FIT.

(2)INSULATION SHALL COMPLETELY COVER I/N'S 32, 34 & 35.

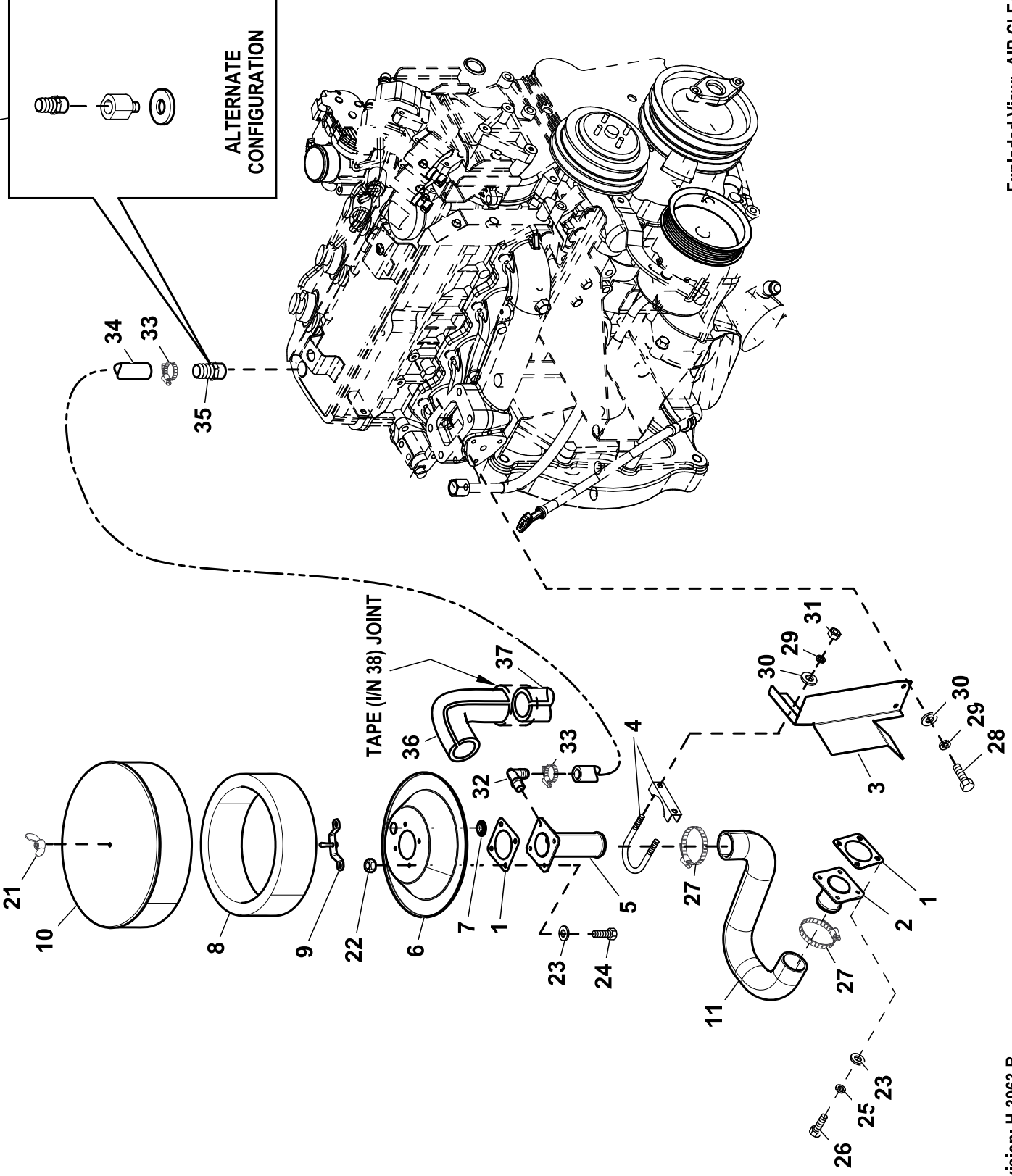
(3)APPLY PIPE SEALANT COMPOUND TO THREADS.

(4) ALTERNATE CONFIGURATION REQUIRES ALL NOTED PARTS.

NOTE: APPLY LOCTITE 620 BEARING RETAINMENT COMPOUND TO OUTSIDE SURFACE OF FITTING (I/N 35) THAT PRESSES INTO VALVE COVER.

GROUP D

35 SEE NOTE (4)



EXPLODED VIEW: AIR CLEANER 2.4L G2 TURBO

DRAWING #: 0H1954

GROUP D

APPLICABLE TO:

| ITEM | PART# | QTY. | DESCRIPTION |
|----------|---------------|--------|---------------------------------|
| 1 | 0F4269 | 2 | GASKET MIXER BODY |
| 2 | 0H0030 | 1 | ADAPTOR-MIXER |
| 3 | 0G39340ST03 | 1 | BRACKET AIR INTAKE |
| 4 | 035480 | 1 | BOLT U 5/16-18 X 2.06 |
| 5 | 0H0028 | 1 | ADAPTOR-AIR CLEANER |
| 6 | 0F4271 | 1 | BASE PLATE, AIR CLEANER |
| 7 | 0H0219 | 1 | PLUG PLASTIC 2.5" BLACK |
| 8 | 0F5418 | 1 | ELEMENT AIR FILTER |
| 9 | 0F4270 | 1 | HOLD DOWN AIR CLEANER PLATED |
| 10 | 0F6323 | 1 | PLATE, AIR CLEANER TOP |
| 11 | 0H0035 | 1 | HOSE AIR INTAKE |
| 12 | 0G0153 | 1 | BARBED EL 90 1/2NPT X 3/4 HOSE |
| 13 | 0D3700 | 4 | NUT FLANGE M6-1.0 NYLOK |
| 14 | 049811 | 8 | WASHER, FLAT, M6 |
| 15 | 045757 | 4 | SCREW HHC M6-1.0 X 25 G8.8 |
| 16 | 022097 | 4 | WASHER LOCK M6-1/4 |
| 17 | 047411 | 4 | SCREW HHC M6-1.0 X 16 C8.8 |
| 18 | 022145 | 2 | WASHER FLAT 5/16-M8 ZINC |
| 19 | 022129 | 2 | WASHER LOCK M8-5/16 |
| 20 | 039253 | 2 | SCREW HHC M8-1.25 X 20 G8.8 |
| 21 | 037561 | 1 | NUT WING 1/4-20 W/NY INS ST ZN |
| 22 | 0D3700 | 4 | NUT FLANGE M6-1.0 NYLOK |
| 23 | 049811 | 8 | WASHER, FLAT, M6 |
| 24 | 045757 | 4 | SCREW HHC M6-1.0 X 25 G8.8 |
| 25 | 022097 | 4 | WASHER LOCK M6-1/4 |
| 26 | 047411 | 4 | SCREW HHC M6-1.0 X 16 C8.8 |
| 27 | 086133C | 2 | CLAMP HI TORQUE 1.75 - 2.625 |
| 28 | 039253 | 2 | SCREW HHC M8-1.25 X 20 G8.8 |
| 29 | 022129 | 4 | WASHER LOCK M8-5/16 |
| 30 | 022145 | 4 | WASHER FLAT 5/16-M8 ZINC |
| 31 | 022259 | 2 | NUT HEX 5/16-18 STEEL |
| 32 | 0H1712 | 1 | BARBED EL-90 POLY 1/2NPT X 3/4 |
| 33 | 057822 | 2 | CLAMP HOSE #8 .53-1.00 |
| 34 | 059057 | 1 | HOSE 3/4 ID SAE-30R2 (7.62"LG") |
| 35 | 0H0027 | 1 | FITTING VENT VALVE COVER 2.4L |
| | 047527(3)(4) | 1 | BARBED STR 1/2NPT X 3/4 |
| | 0H1644(4) | 1 | FTG VNT VALVE COVER |
| | 0G10080103(4) | 1(REF) | GASKET, PCV VALVE |
| 36(1)(2) | 0H1787A | 1 | PIPE INSULATION ELBO |
| 37(2) | 0H1787 | 1 | PIPE INSULATION (4.5"LG) |
| 38(2) | 0H1801 | 1 | PIPE INSULATION TAPE (7"LG) |

- (1)TRIM PIPE INSULATION ELBOW TO FIT.
- (2)INSULATION SHALL COMPLETELY COVER I/N'S 32, 34 & 35.
- (3)APPLY PIPE SEALANT COMPOUND TO THREADS.
- (4) ALTERNATE CONFIGURATION REQUIRES ALL NOTED PARTS.

NOTE: APPLY LOCTITE 620 BEARING RETAINMENT COMPOUND TO OUTSIDE SURFACE OF FITTING (I/N 35) THAT PRESSES INTO VALVE COVER.